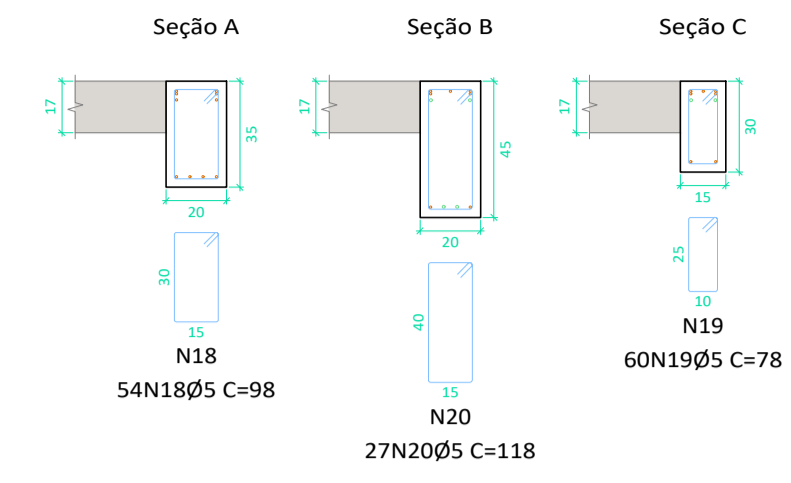
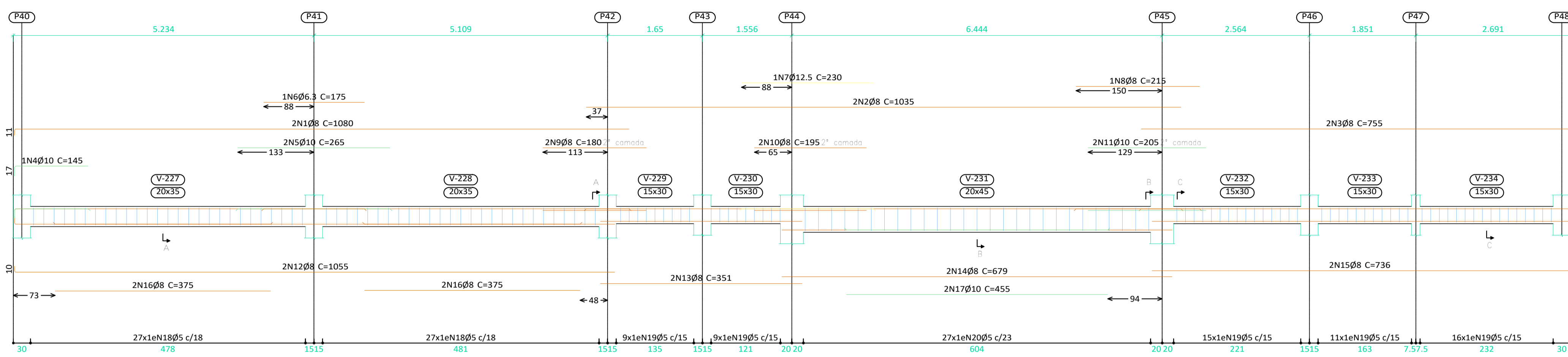
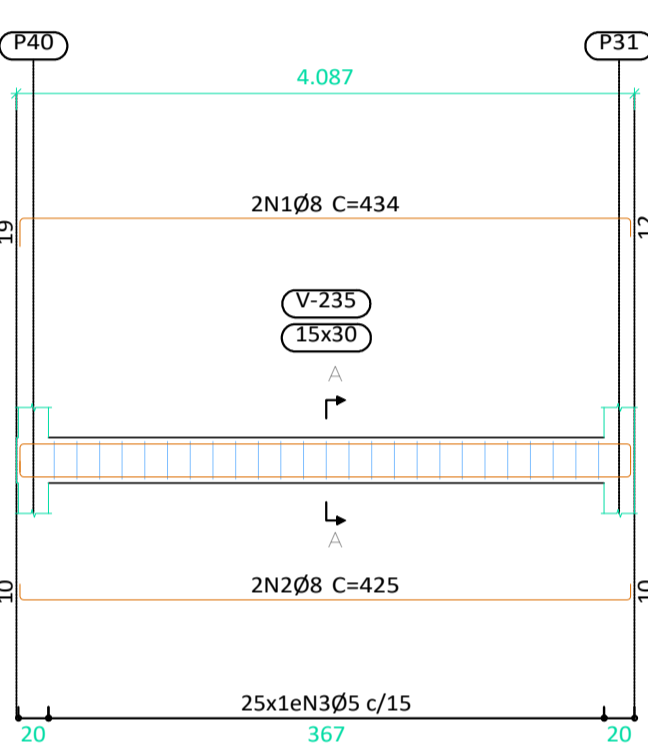


V 10  
Escala vigas 1:50  
Escala seções 1:25

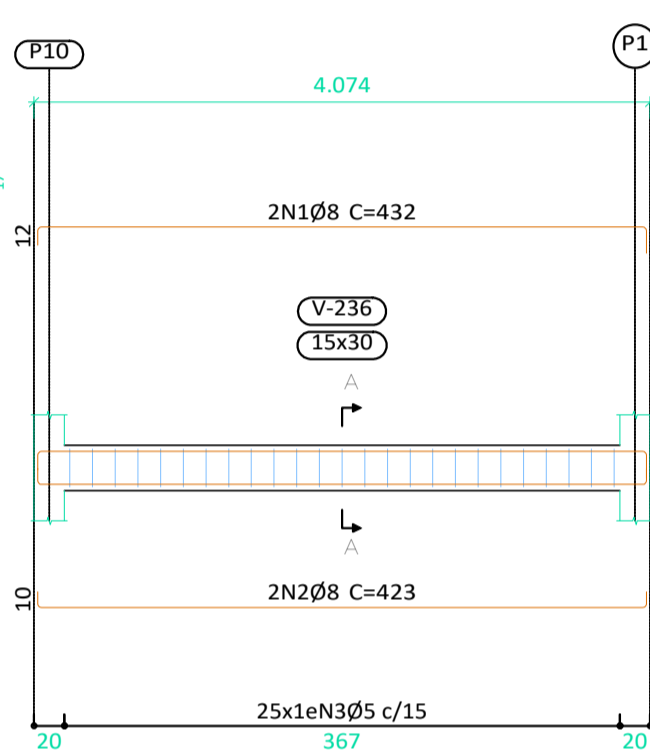


Elemento	Pos.	Diam.	Q.	Dob. (cm)	Ret. (cm)	Comp. (cm)	Total (cm)	CA-50 (kg)	CA-60 (kg)		
V 6	1	Ø8	2	12.3	271.6	10.4	294	588	2.3		
	2	Ø8	2	10.4	271.6	10.4	292	584	2.3		
	3	Ø5	16	5	68	5	78	1248	2.0		
Total+10%:									5.1	2.2	
V 8	1	Ø8	2	11.11	1068.9		1080	2160	8.5		
	2	Ø8	2	1045			1045	2090	8.3		
	3	Ø8	2	295			295	590	2.3		
	4	Ø10	1	117.4	127.3		145	145	0.9		
	5	Ø8	2	260			260	520	2.1		
	6	Ø10	1	200			200	200	1.2		
	7	Ø10	1	230			230	230	1.4		
	8	Ø12.5	1	230			230	230	2.2		
	9	Ø8	2	180			180	360	1.4		
	10	Ø10	2	220			220	440	2.7		
	11	Ø8	2	195			195	390	1.5		
	12	Ø8	2	1044.4			1055	2110	8.3		
	13	Ø8	2	850.6			851	702	2.8		
	14	Ø8	2	886.9			887	1374	5.4		
	15	Ø8	2	274.1	10.4		284	568	2.2		
	16	Ø8	4	375			375	1500	5.9		
	17	Ø8	2	450			450	900	3.6		
	18	Ø10	1	395			395	395	2.4		
	19	Ø5	54	5	88	5	98	5292	8.3		
	20	Ø5	31	5	68	5	78	2418	3.8		
	21	Ø5	30	5	98	5	108	3240	5.1		
Total+10%:									69.4	18.9	
V 10	1	Ø8	2	10.9	1069.1		1080	2160	8.5		
	2	Ø8	2	1035			1035	2070	8.3		
	3	Ø8	2	744.6	10.4		755	1510	6.0		
	4	Ø10	1	117.4	127.6		145	145	0.9		
	5	Ø10	2	265			265	530	3.3		
	6	Ø6.3	1	175			175	175	0.4		
	7	Ø12.5	1	230			230	230	2.2		
	8	Ø8	1	215			215	215	0.8		
	9	Ø8	2	180			180	360	1.4		
	10	Ø8	2	195			195	390	1.5		
	11	Ø10	2	205			205	410	2.5		
	12	Ø8	2	1044.4			1055	2110	8.3		
	13	Ø8	2	850.6			851	702	2.8		
	14	Ø8	2	886.9			887	1374	5.4		
	15	Ø8	2	274.1	10.4		284	568	2.2		
	16	Ø8	4	375			375	1500	5.9		
	17	Ø10	2	450			450	900	3.6		
	18	Ø5	54	5	88	5	98	5292	8.3		
	19	Ø5	31	5	68	5	78	2418	3.8		
	20	Ø5	27	5	108	5	118	3186	5.0		
	Total+10%:									76.5	22.7
V 11	1	Ø8	2	18.6	403.7	12	434	868	3.4		
	2	Ø8	2	10.4	403.7	10.4	425	850	3.4		
	3	Ø5	25	5	68	5	78	1950	3.1		
Total+10%:									7.5	3.4	
V 12	1	Ø8	2	12	402.4	17.4	432	864	3.4		
	2	Ø8	2	10.4	402.4	10.4	423	846	3.3		
	3	Ø5	25	5	68	5	78	1950	3.1		
Total+10%:									7.4	3.4	
V 13	1	Ø8	2	10.4	403.7	10.4	425	850	3.4		
	2	Ø8	2	10.4	403.7	11.4	426	852	3.4		
	3	Ø5	25	5	68	5	78	1950	3.1		
Total+10%:									7.5	3.4	
V 14	1	Ø8	2	12	402.4	15	429	858	3.4		
	2	Ø8	2	10.4	402.4	10.4	423	846	3.3		
	3	Ø5	25	5	68	5	78	1950	3.1		
Total+10%:									7.4	3.4	
V 15	1	Ø6.3	2	12.1	402.4	12.1	427	854	2.1		
	2	Ø8	1	116.3	93.7		110	110	0.4		
	3	Ø8	1	102.7	17.3		120	120	0.5		
	4	Ø10	2	13	402.4	13	428	856	5.3		
	5	Ø5	21	5	88	5	98	2058	3.2		
Total+10%:									9.1	3.5	
									Ø5:	0.0	60.9
									Ø6.3:	2.7	0.0
									Ø8:	153.5	0.0
									Ø10:	28.8	0.0
									Ø12.5:	4.9	0.0
									Total:	189.9	60.9

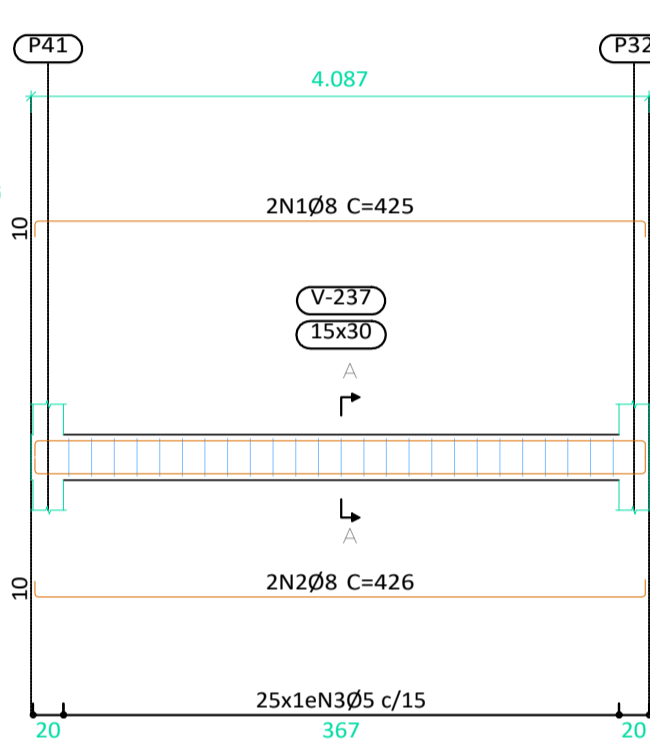
V 11  
Escala vigas 1:50  
Escala seções 1:25



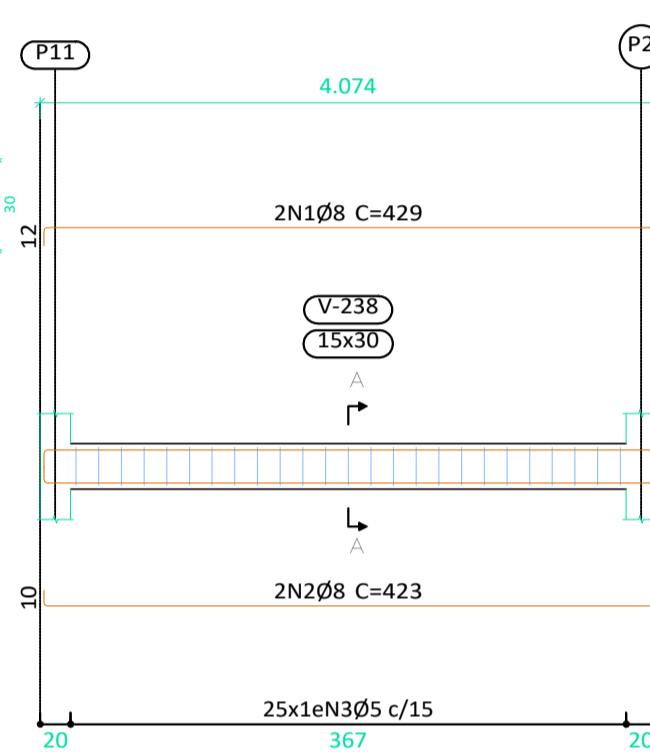
V 12  
Escala vigas 1:50  
Escala seções 1:25



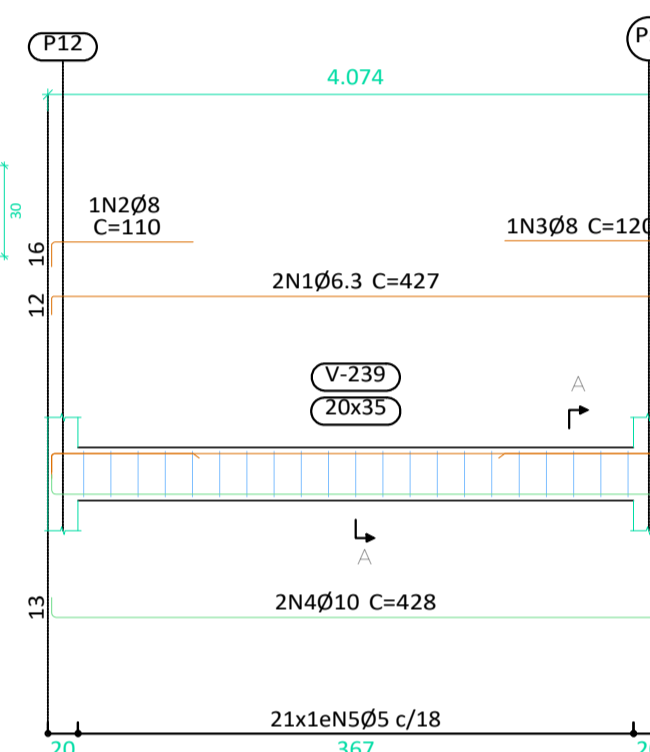
V 13  
Escala vigas 1:50  
Escala seções 1:25



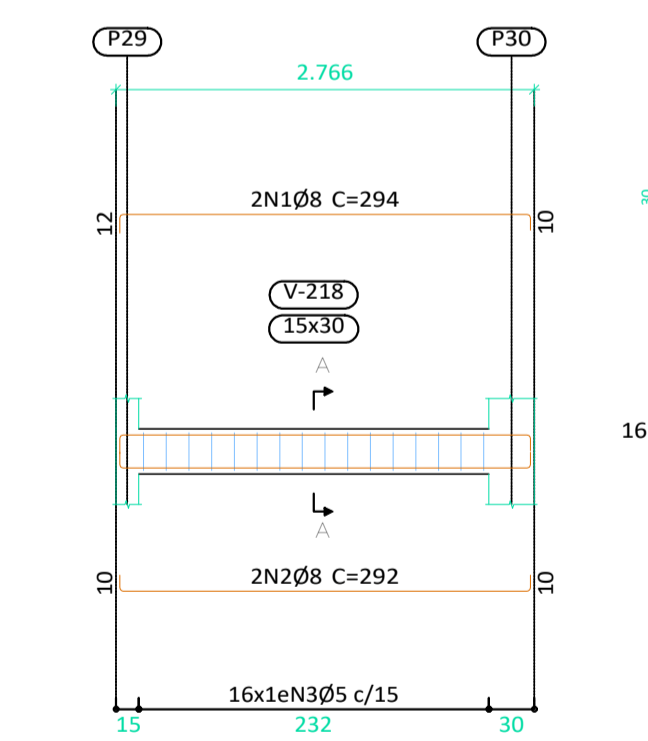
V 14  
Escala vigas 1:50  
Escala seções 1:25



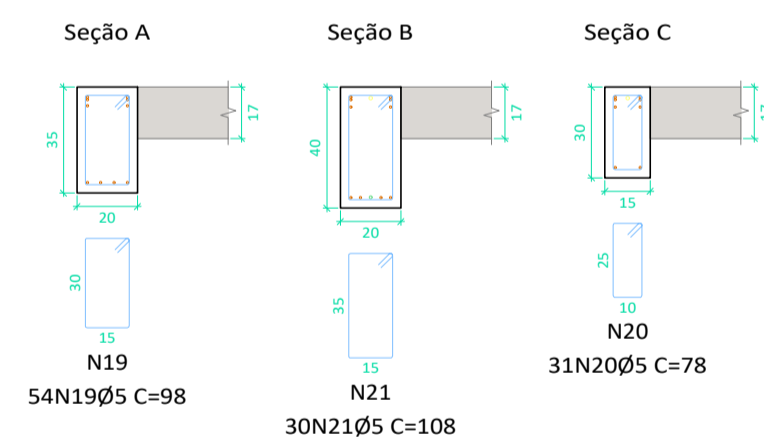
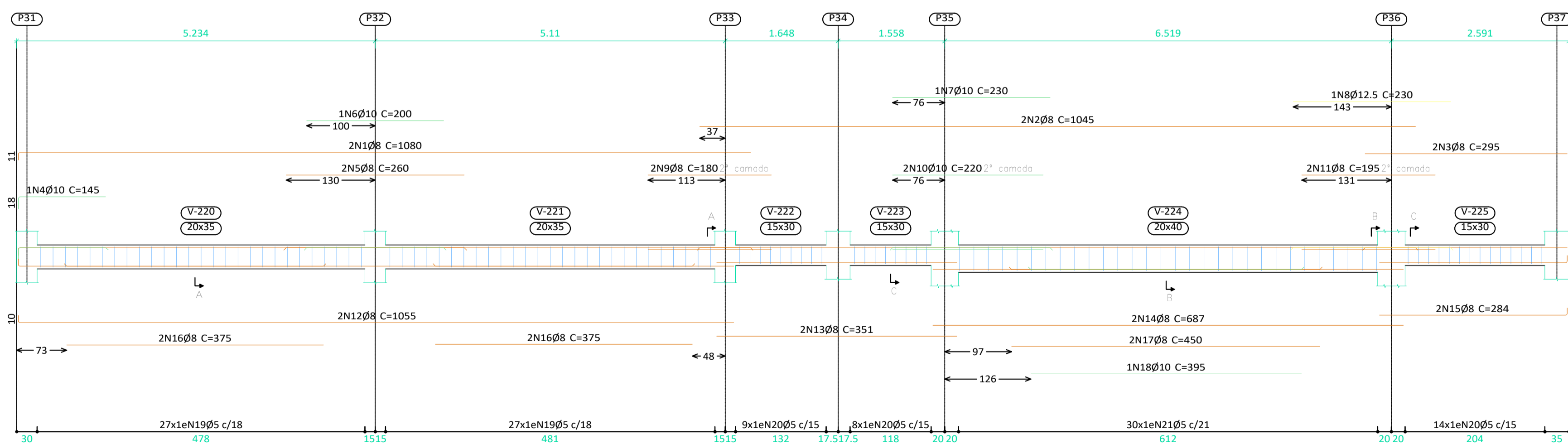
V 15  
Escala vigas 1:50  
Escala seções 1:25



V 6  
Escala vigas 1:50  
Escala seções 1:25



V 8  
Escala vigas 1:50  
Escala seções 1:25



caixa d'água  
Desenho de vigas  
Concreto: C25, em geral  
Aço das barras: CA-50 e CA-60  
Aço dos estribos: CA-50 e CA-60  
Escala vigas 1:50  
Escala seções 1:25  
Escala aberturas 1:25

ATUALIZAÇÃO

CONTRATADA:		CARVALHO AMARAL ENGENHARIA	
CONTRATANTE:		PREF. MUNICIPAL CLARO DOS POÇOS/MG	
TÍTULO:		MERCADO MUNICIPAL DE CLARO DOS POÇOS PROJETO ESTRUTURAL DETALHES DAS VIGAS; QUADROS	
DATA:	04/04/2023	ESCALA:	INDICADA
PRANCHA:	09/13		