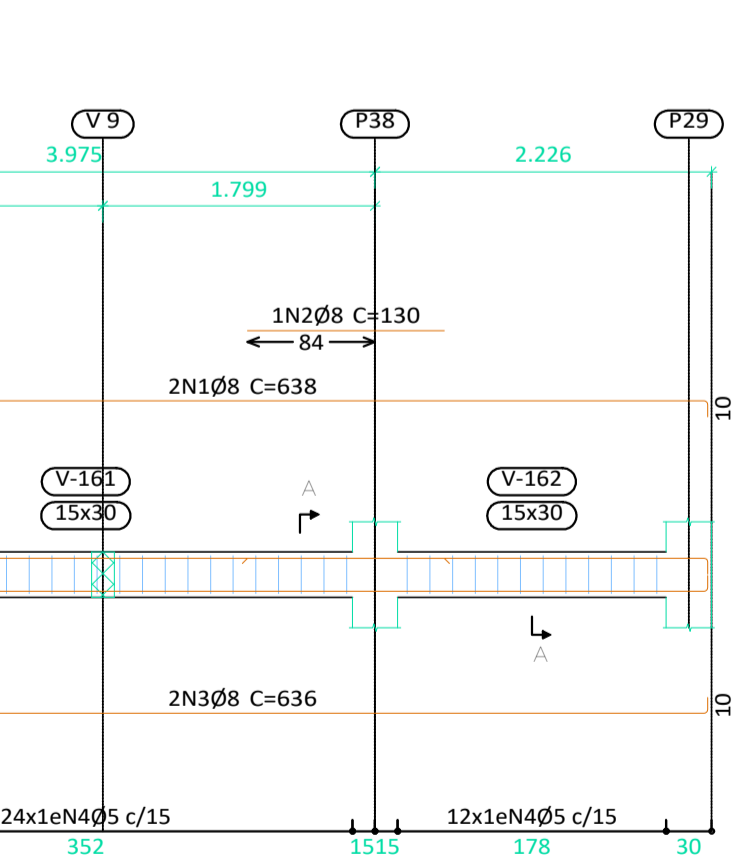
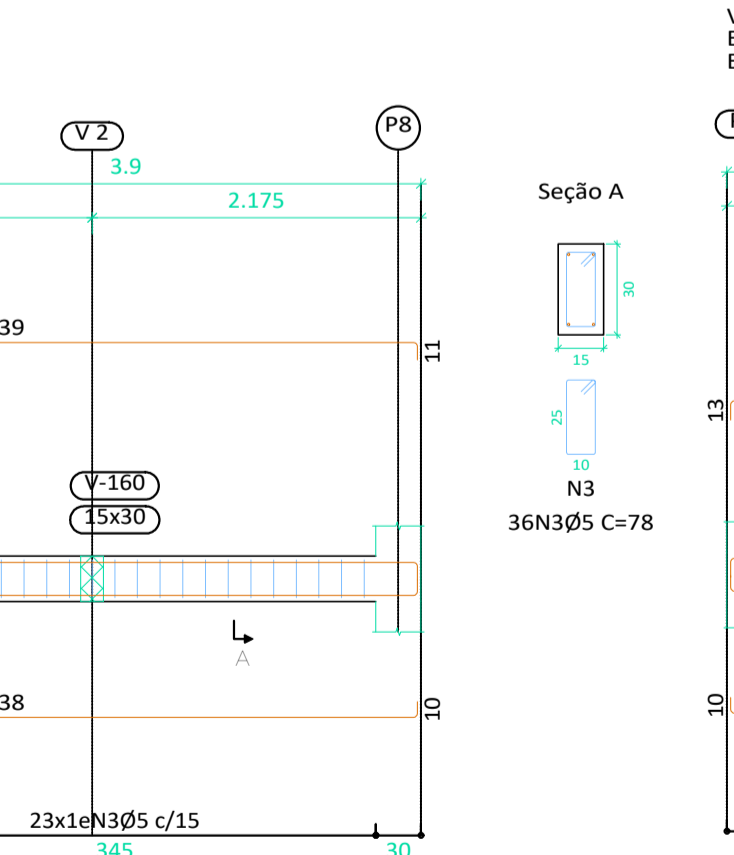
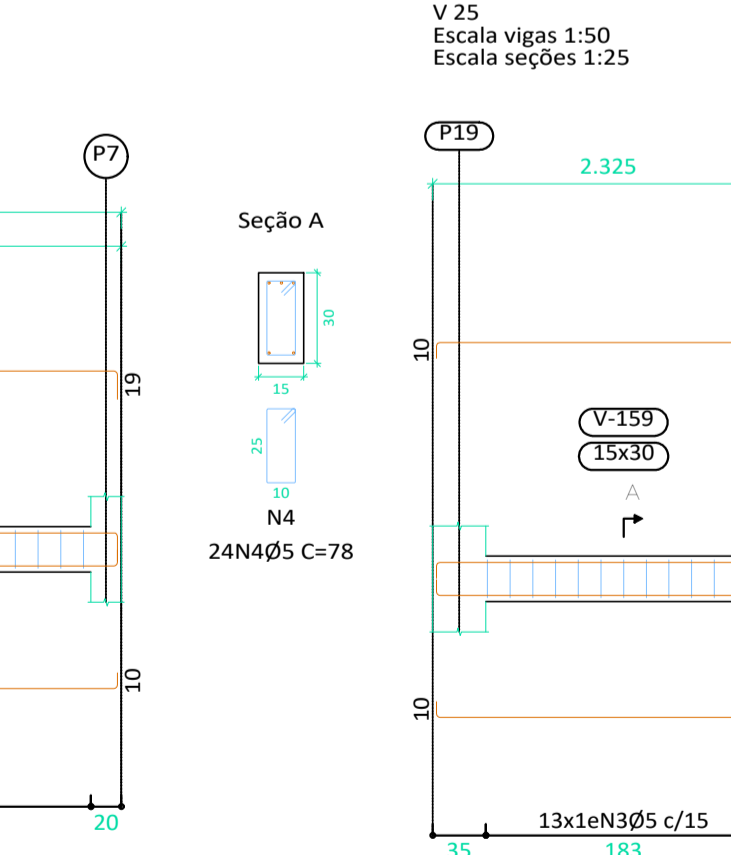
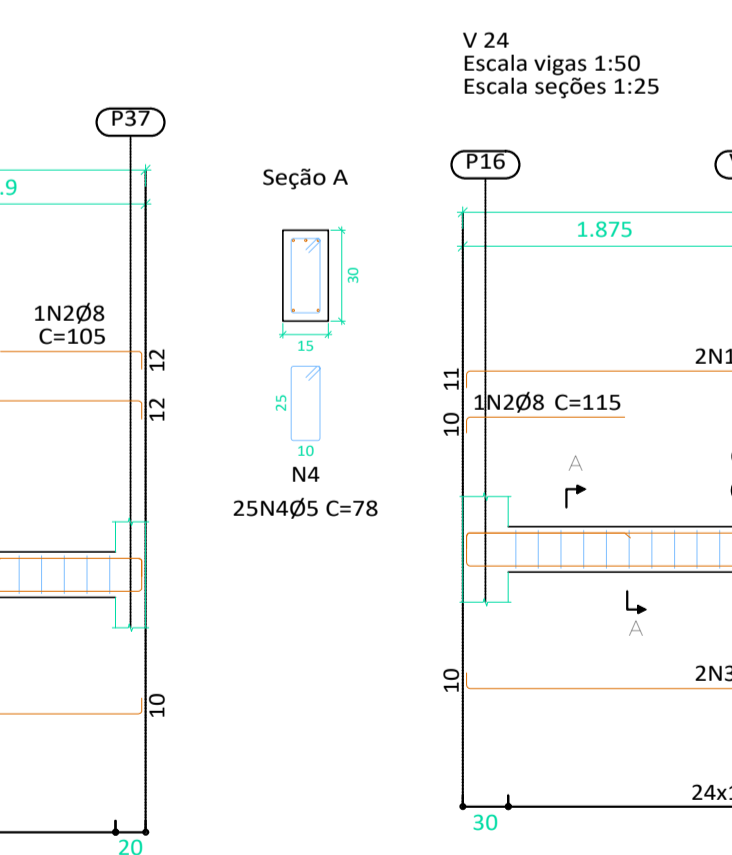
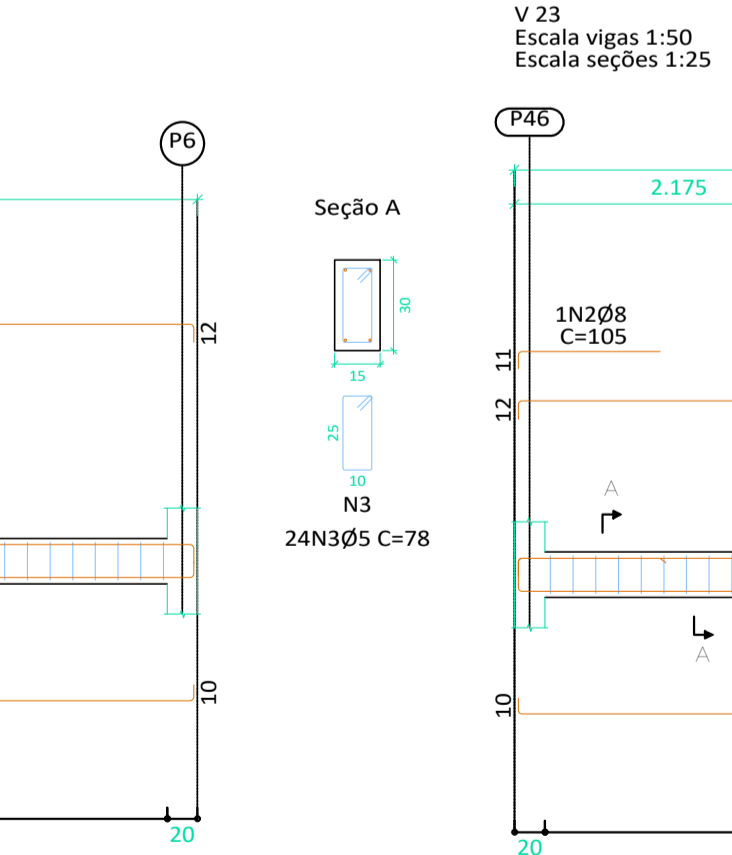
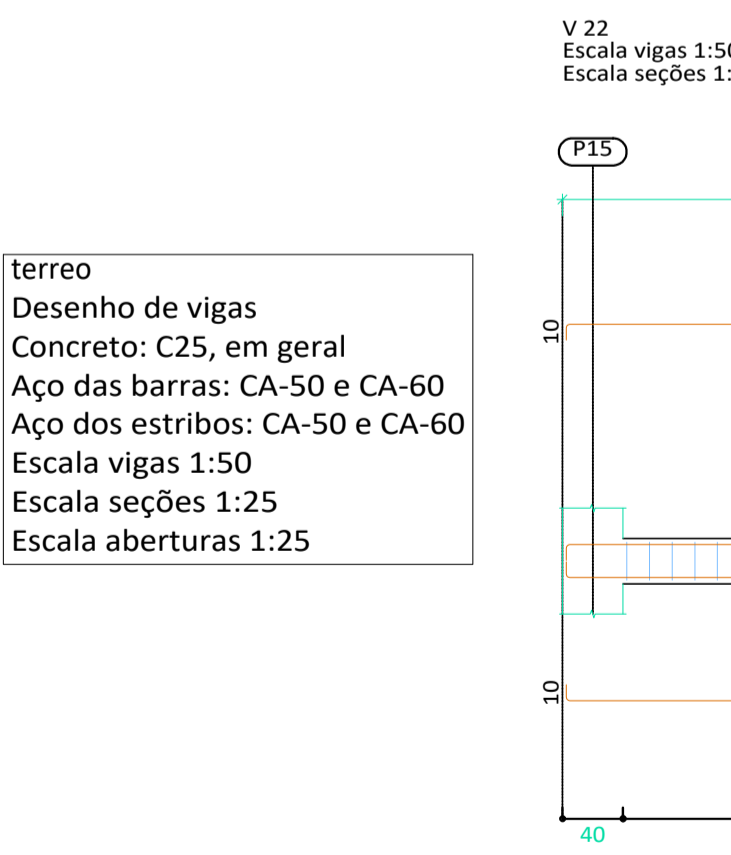
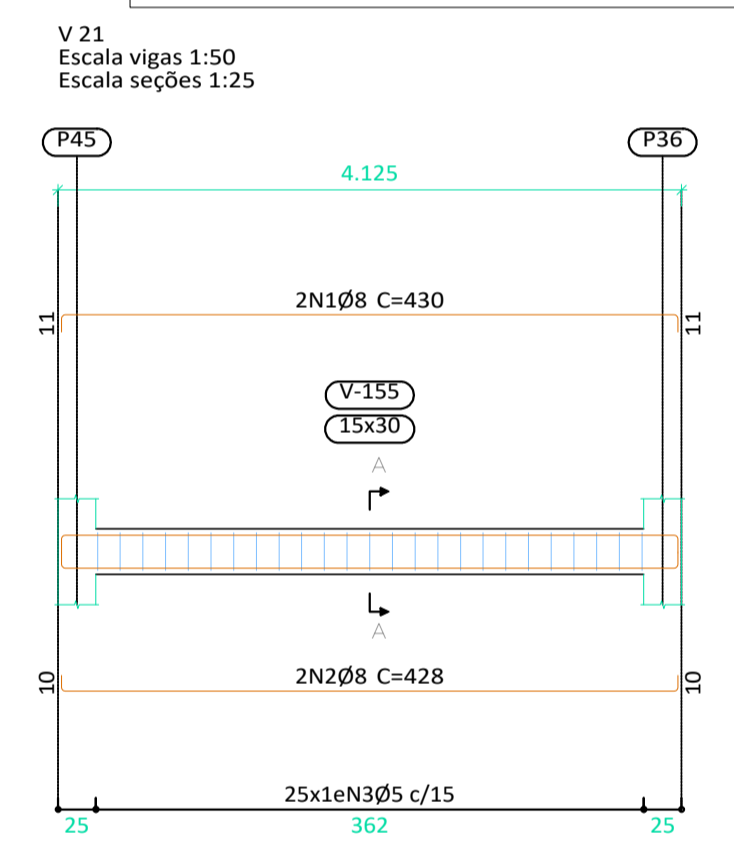
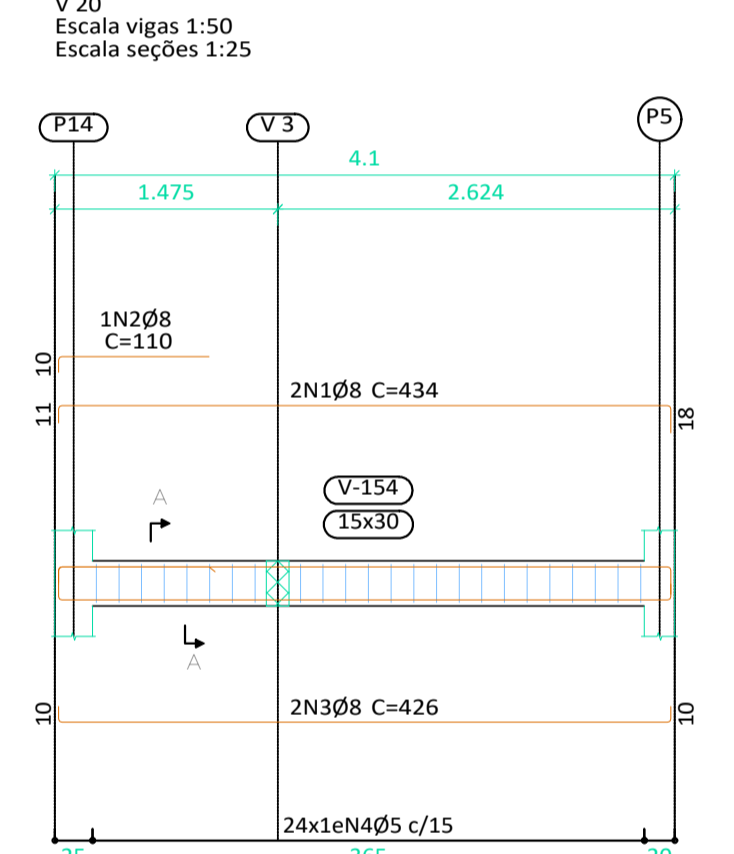
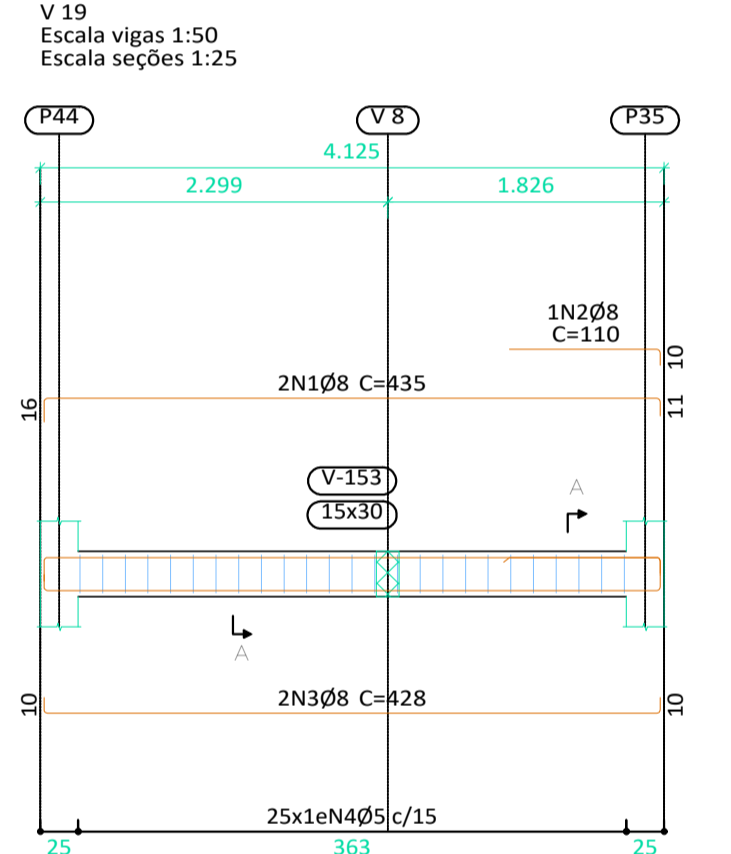
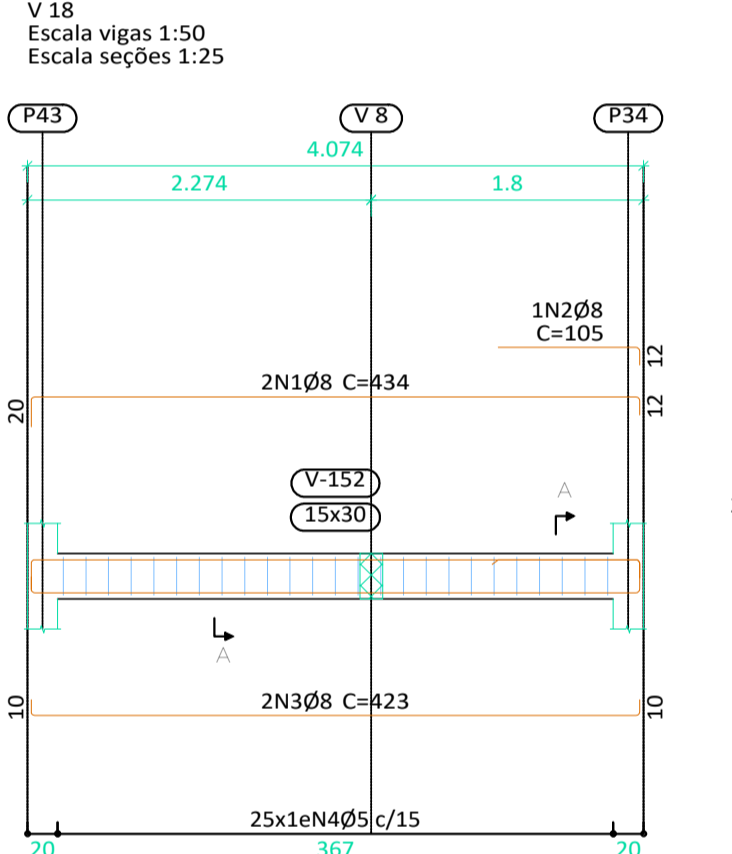
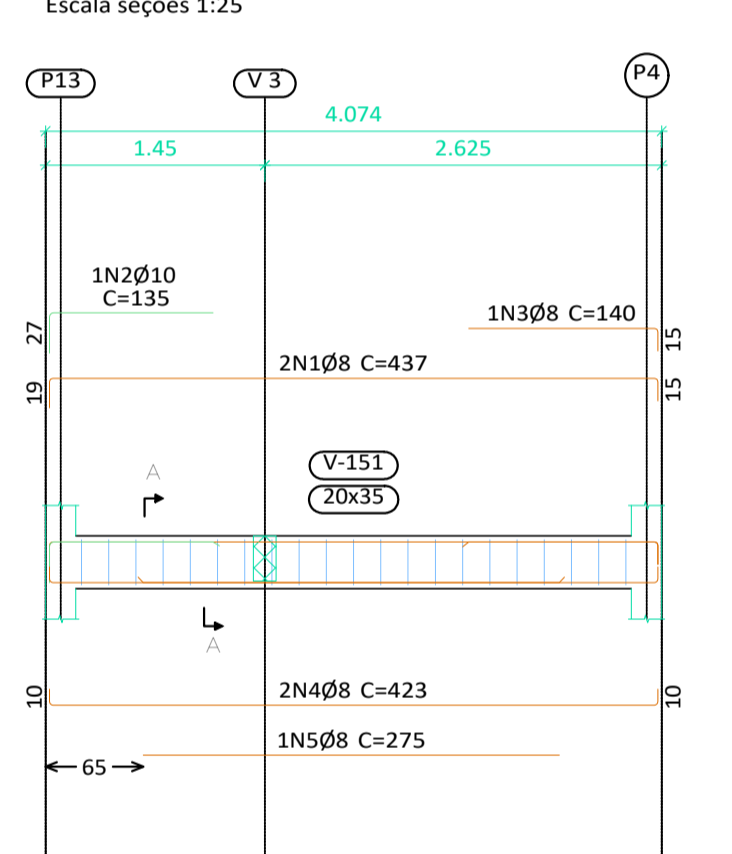
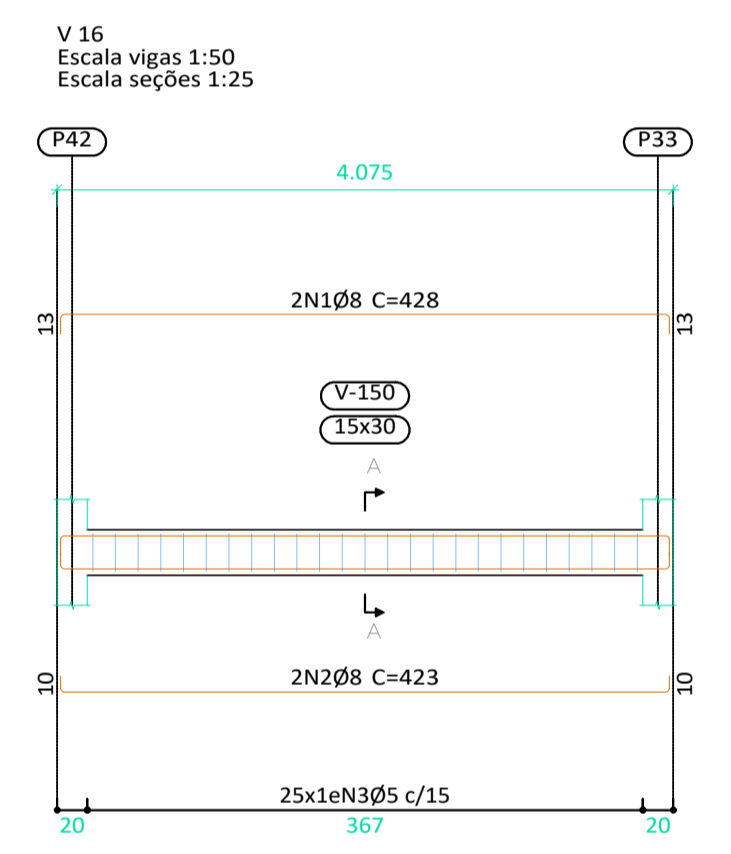


Elemento	Pos.	Diam.	Q.	Dob. (cm)	Reta (cm)	Dob. (cm)	Comp. (cm)	Total (cm)	CA-50 (kg)	CA-60 (kg)
V 27	1	Ø8	2	12.1	807.2	819	1638	6.5		
	2	Ø8	8	575	575	4600	18.2			
	3	Ø8	2	980	980	1960	7.7			
	4	Ø8	2	418	12	430	860	3.4		
	5	Ø8	2	10.4	807.2	818	1636	6.5		
	6	Ø8	2	971.4	971	1942	7.7			
	7	Ø8	2	400	10.4	410	820	3.2		
	8	Ø5	200	5	68	5	78	15600		24.5
Total+10%:									58.5	27.0
Ø5:									0.0	27.0
Ø8:									58.5	0.0
Total:									58.5	27.0

Resumo Aço	Comp. total (m)	Peso+10% (kg)	Total
CA-50 Ø8	1113.1	483	
Ø10	5.8	4	
Ø12.5	8.6	9	496
CA-60 Ø5	1200.4	207	207
Total			703

terreio
 Desenho de vigas
 Concreto: C25, em geral
 Aço das barras: CA-50 e CA-60
 Aço dos estribos: CA-50 e CA-60
 Escala vigas 1:50
 Escala seções 1:25
 Escala aberturas 1:25

Elemento	Pos.	Diam.	Q.	Dob. (cm)	Reta (cm)	Dob. (cm)	Comp. (cm)	Total (cm)	CA-50 (kg)	CA-60 (kg)
V 16	1	Ø8	2	12.8	402.5	12.8	428	856	3.4	
	2	Ø8	2	10.4	402.5	10.4	423	846	3.3	
	3	Ø5	25	5	68	5	78	1950		3.1
Total+10%:									7.4	3.4
V 17	1	Ø8	2	19.4	402.4	14.8	437	874	3.5	
	2	Ø10	1	126.8	108.2	135	135	135	0.8	
	3	Ø8	1	125.2	14.8	140	140	140	0.6	
	4	Ø8	2	10.4	402.4	10.4	423	846	3.3	
	5	Ø5	1	275	275	275	275	275	1.1	
	6	Ø5	21	5	88	5	98	2058		3.2
Total+10%:									10.2	3.5
V 18	1	Ø8	2	19.7	402.4	12	434	868	3.4	
	2	Ø8	1	193.5	11.5	105	105	105	0.4	
	3	Ø8	2	10.4	402.4	10.4	423	846	3.3	
	4	Ø5	25	5	68	5	78	1950		3.1
Total+10%:									7.8	3.4
V 19	1	Ø8	2	15.6	407.5	11.5	435	870	3.4	
	2	Ø8	1	99.6	10.4	110	110	110	0.4	
	3	Ø8	2	10.4	407.5	10.4	428	856	3.4	
	4	Ø5	25	5	68	5	78	1950		3.1
Total+10%:									7.9	3.4
V 20	1	Ø8	2	11.5	405	18.1	434	868	3.4	
	2	Ø8	1	110.4	99.6	110	110	110	0.4	
	3	Ø8	2	10.4	405	10.4	426	852	3.4	
	4	Ø5	24	5	68	5	78	1872		2.9
Total+10%:									7.9	3.2
V 21	1	Ø8	2	11.5	407.5	11.5	430	860	3.4	
	2	Ø8	2	10.4	407.5	10.4	428	856	3.4	
	3	Ø5	25	5	68	5	78	1950		3.1
Total+10%:									7.5	3.4
V 22	1	Ø8	2	10.4	405	12	427	854	3.4	
	2	Ø8	2	10.4	405	10.4	426	852	3.4	
	3	Ø5	24	5	68	5	78	1872		2.9
Total+10%:									7.5	3.2
V 23	1	Ø8	2	12	402.5	12	426	852	3.4	
	2	Ø8	2	11.3	93.7	105	210	210	0.8	
	3	Ø8	2	10.4	402.5	10.4	423	846	3.3	
	4	Ø5	25	5	68	5	78	1950		3.1
Total+10%:									8.3	3.4
V 24	1	Ø8	2	11	400	18.6	430	860	3.4	
	2	Ø8	1	110.4	104.6	115	115	115	0.5	
	3	Ø8	2	10.4	400	10.4	421	842	3.3	
	4	Ø5	24	5	68	5	78	1872		2.9
Total+10%:									7.9	3.2
V 25	1	Ø8	2	10.4	617.5	11.5	639	1278	5.0	
	2	Ø8	2	10.4	617.5	10.4	638	1276	5.0	
	3	Ø5	36	5	68	5	78	2808		4.4
	Total+10%:									11.0
V 26	1	Ø8	2	12.5	615	10.4	638	1276	5.0	
	2	Ø8	1	130	130	130	130	130	0.5	
	3	Ø8	2	10.4	615	10.4	636	1272	5.0	
	4	Ø5	36	5	68	5	78	2808		4.4
Total+10%:									11.6	4.8
Ø5:									0.0	39.7
Ø8:									94.2	0.0
Ø10:									0.8	0.0
Total:									95.0	39.7



terreio
 Desenho de vigas
 Concreto: C25, em geral
 Aço das barras: CA-50 e CA-60
 Aço dos estribos: CA-50 e CA-60
 Escala vigas 1:50
 Escala seções 1:25
 Escala aberturas 1:25

ATUALIZAÇÃO			
0	EMISSÃO INICIAL	DATA	EXEC. VERIF. APROV.
REV.	DESCRIÇÃO	DATA	EXEC. VERIF. APROV.

CONTRATADA:	CARVALHO AMARAL ENGENHARIA CNPJ nº: 16.783.066/0001-35 Avenida Mestre Fátima, nº 726, 1º andar Centro, Montes Claros/MG. CEP: 38800-000	RESP. TEC. MAX HENRIQUE VELOSO DA SILVA REG. CREA: MG 248.998/D
CONTRATANTE:	PREF. MUNICIPAL CLARO DOS POÇÕES/MG CNPJ nº: 23.852.734/0001-02 CACHOEIRA, S/N CENTRO CLARO DOS POÇÕES-MG CEP: 38800-000	MUNICÍPIO/ÁREA: CLARO DOS POÇÕES/MG RESPONSÁVEL CONTRATANTE: PREF. MUNICIPAL DE CLARO DOS POÇÕES /MG
TÍTULO: MERCADO MUNICIPAL DE CLARO DOS POÇÕES PROJETO ESTRUTURAL DETALHES DAS VIGAS; QUADROS		ENDEREÇO DA OBRA: AV. TANCREDO NEVES
DATA:	04/04/2023	ESCALA: INDICADA
ARQUIVO: DE-2022.2079-MG.CLA.-EST-EXE.001=0	PRANCHA:	07/13