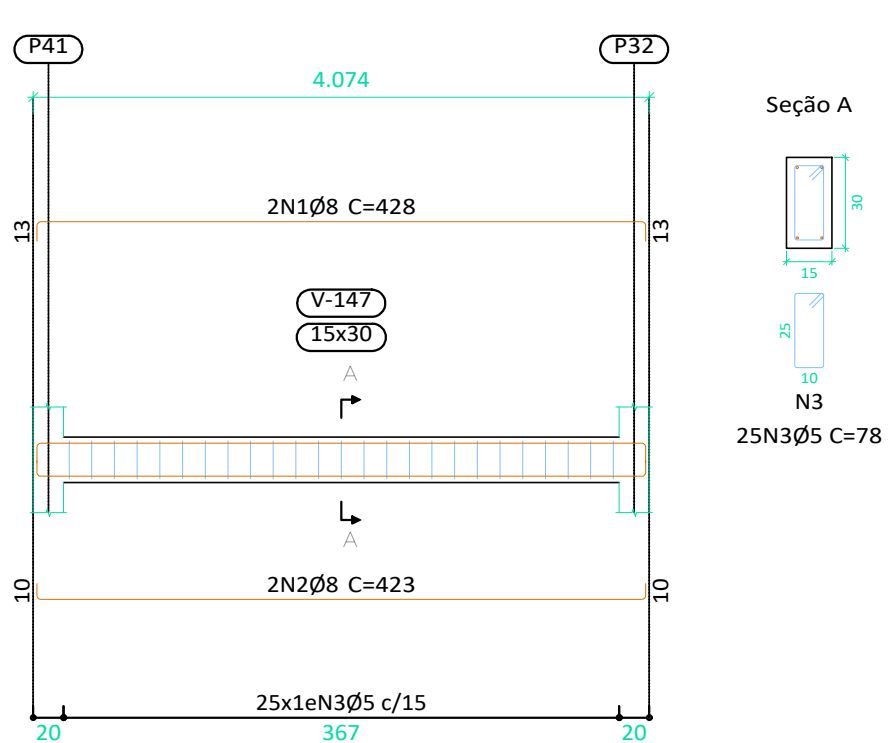
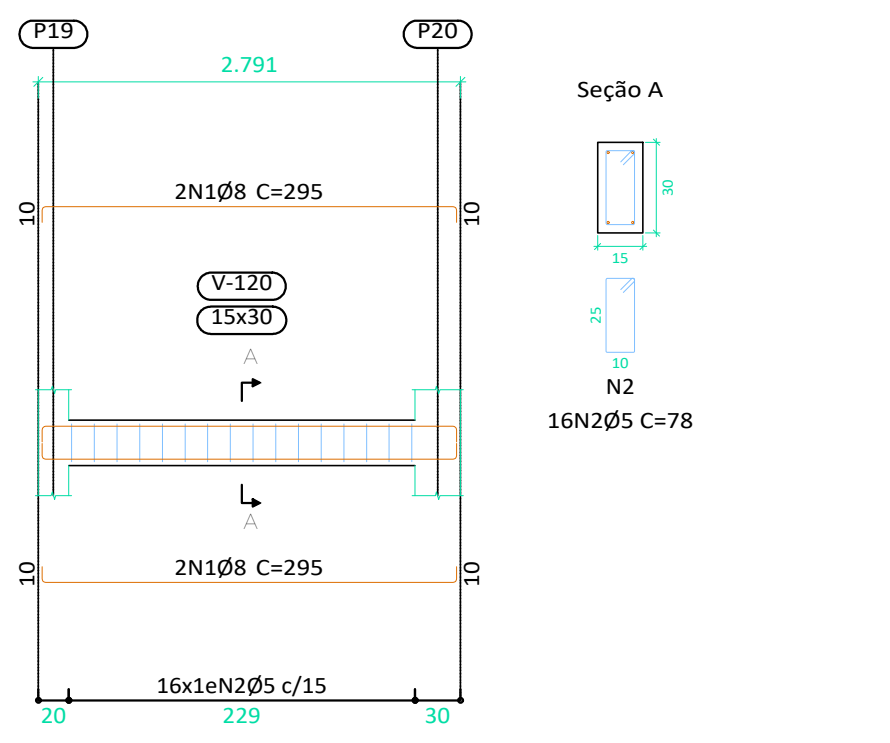


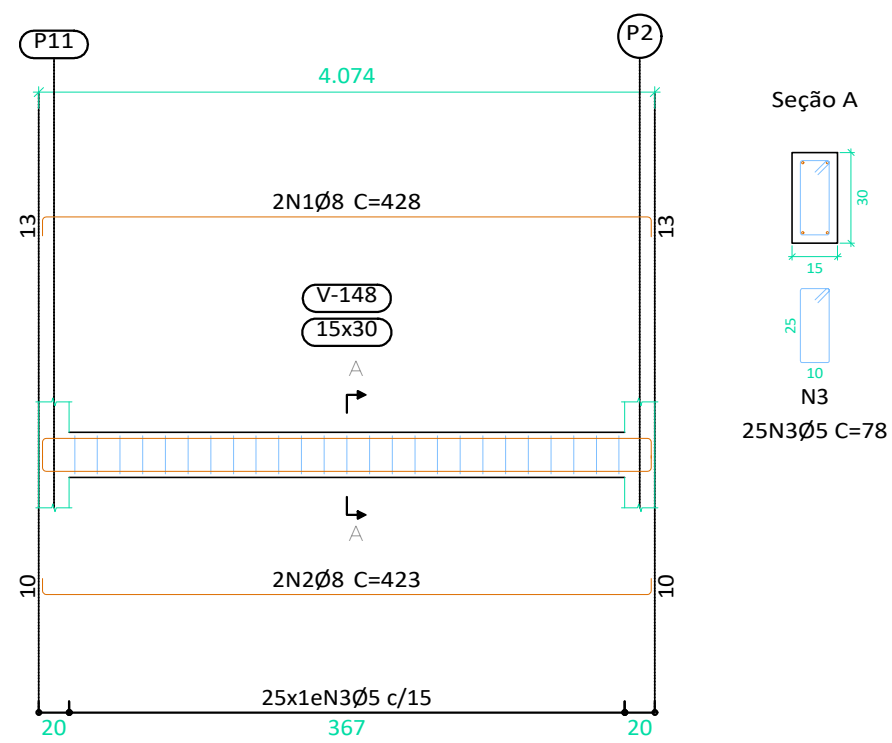
V 13
Escala vigas 1:50
Escala seções 1:25



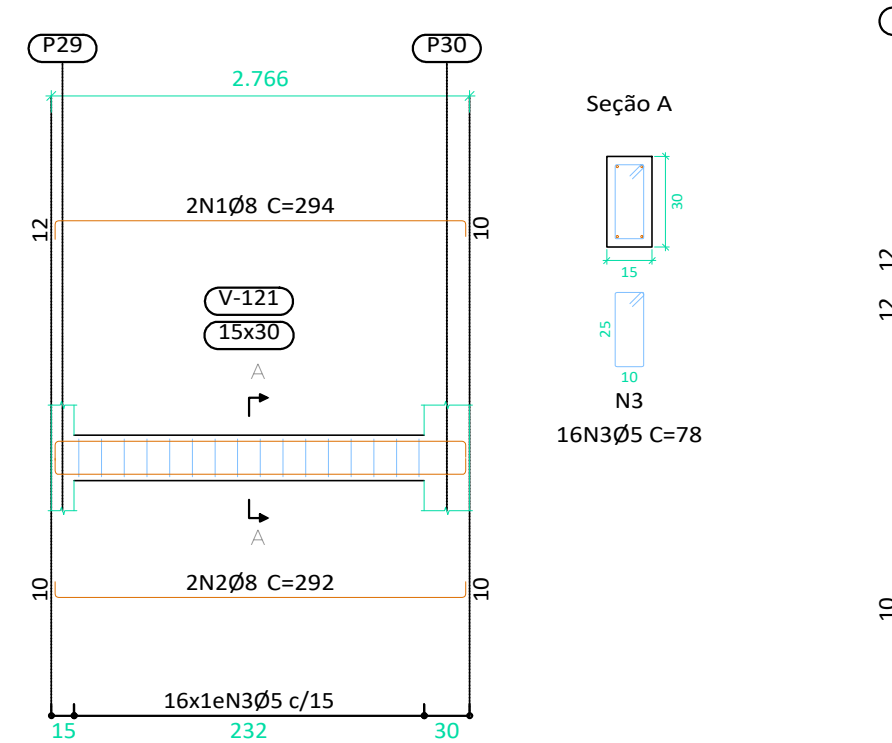
V 5
Escala vigas 1:50
Escala seções 1:25



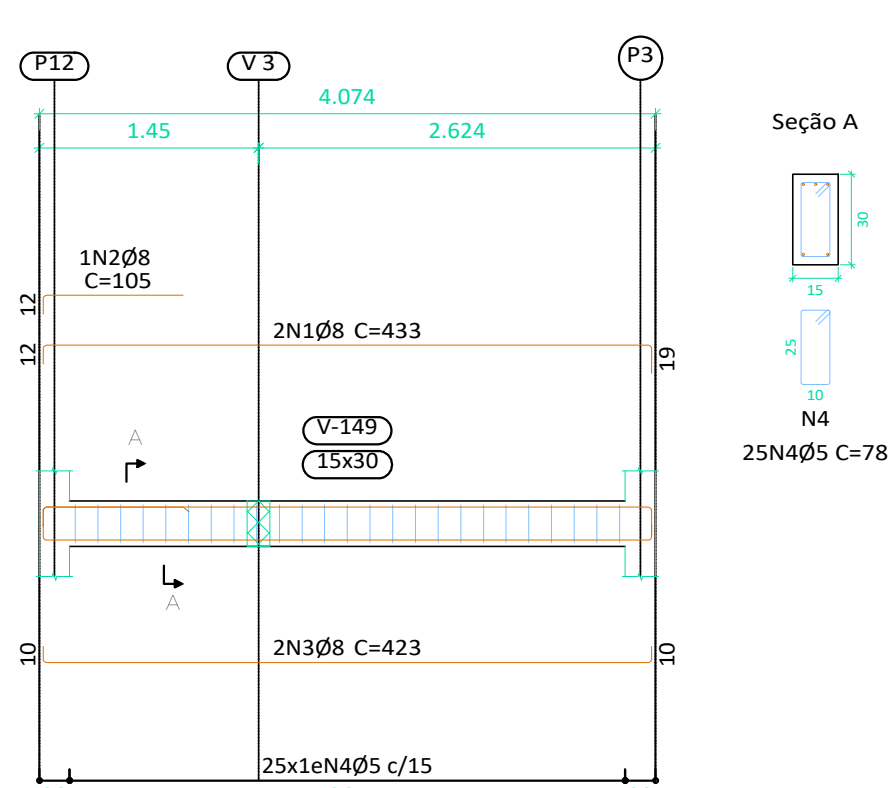
V 14
Escala vigas 1:50
Escala seções 1:25



V 6
Escala vigas 1:50
Escala seções 1:25

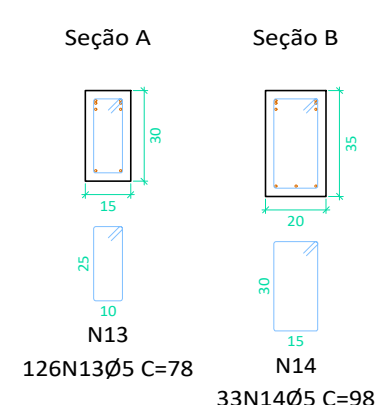
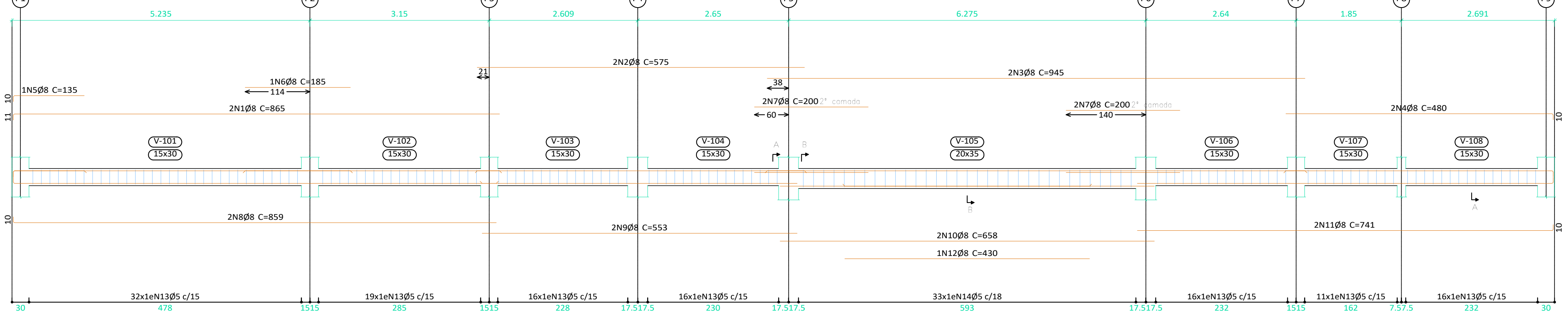


V 15
Escala vigas 1:50
Escala seções 1:25

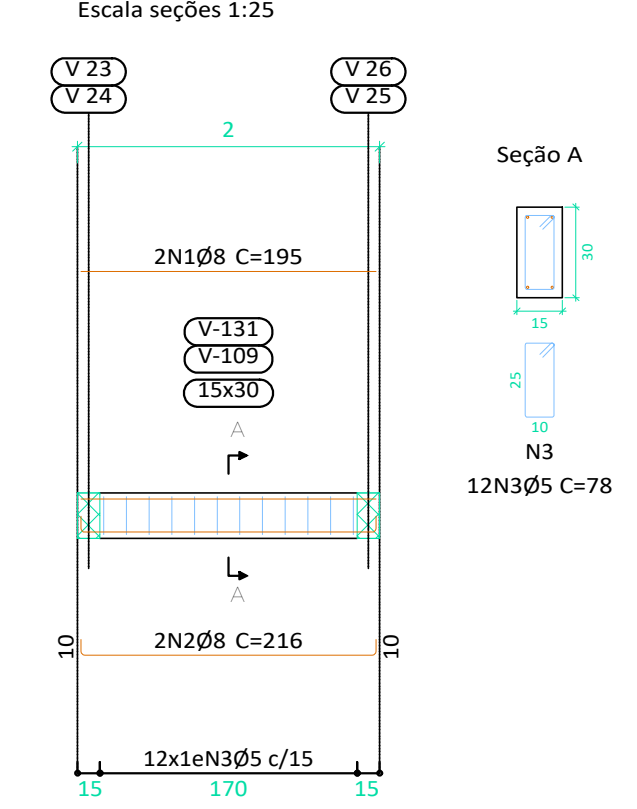


Elemento	Pos.	Diam.	Cl.	Dob. (cm)	Reta (cm)	Dob. (cm)	Comp. (cm)	Total (cm)	CA-50 (kg)	CA-60 (kg)		
V 1	1	Ø8	2	10.8	854.2		865	1730	6.8			
	2	Ø8	2		575		575	1150	4.5			
	3	Ø8	2		945		945	1890	7.5			
	4	Ø8	2	469.6	10.4		480	960	3.8			
	5	Ø8	1		110.4	124.6		135	135	0.5		
	6	Ø8	1		185		185	185	0.7			
	7	Ø8	4		200		200	800	3.2			
	8	Ø8	2	10.4	848.4		859	1718	6.8			
	9	Ø8	2		553.4		553	1106	4.4			
	10	Ø8	2		657.5		658	1316	5.2			
	11	Ø8	2		730.6	10.4	741	1482	5.9			
	12	Ø8	1		430		430	430	1.7			
	13	Ø5	126	5	68	5	78	9828		15.4		
	14	Ø5	33	5	88	5	98	3234		5.1		
Total+10%:											56.1	22.6
V 2=V 9	1	Ø8	2		195		195	390	1.5			
	2	Ø8	2	10.4	195	10.4	216	432	1.7			
	3	Ø5	12	5	68	5	78	936		1.5		
Total+10%:											3.5	1.7
V 3	1	Ø8	2		536		536	1072	4.2			
	2	Ø8	2	10.4	536	10.4	557	1114	4.4			
Total+10%:											7.0	3.4
V 4	1	Ø8	2	410.8	851		862	3488	13.6			
	2	Ø8	2		585		585	1170	4.6			
	3	Ø8	2		945		945	1890	7.5			
	4	Ø8	2		465		465	930	3.7			
	5	Ø8	1	10.4	124.6		135	135	0.5			
	6	Ø8	1		185		185	185	0.7			
	7	Ø8	2		200		200	400	1.6			
	8	Ø8	2		195		195	390	1.5			
	9	Ø8	2		568.4		568	1136	4.5			
	10	Ø8	2		650		650	1300	5.1			
	11	Ø8	2		713.1	10.4	724	1448	5.7			
	12	Ø8	1		435		435	435	1.7			
	13	Ø5	120	5	68	5	78	9360		14.7		
	14	Ø5	34	5	88	5	98	3332		5.2		
Total+10%:											55.8	21.9
V 5	1	Ø8	4	10.4	274.1	10.4	295	1180	4.7			
	2	Ø5	16	5	68	5	78	1248		2.0		
Total+10%:											5.2	2.2
V 6	1	Ø8	2	12.3	271.6	10.4	294	588	2.3			
	2	Ø8	2	10.4	271.6	10.4	292	584	2.3			
	3	Ø5	16	5	68	5	78	1248		2.0		
Total+10%:											5.1	2.2
V 13	1	Ø8	2	12.9	402.4	12.8	428	856	3.4			
	2	Ø8	2	10.4	402.4	10.4	423	846	3.3			
	3	Ø5	25	5	68	5	78	1950		3.1		
Total+10%:											7.4	3.4
V 14	1	Ø8	2	12.6	402.4	13.1	428	856	3.4			
	2	Ø8	2	10.4	402.4	10.4	423	846	3.3			
	3	Ø5	25	5	68	5	78	1950		3.1		
Total+10%:											7.4	3.4
V 15	1	Ø8	2	12.4	402.4	18.5	433	866	3.4			
	2	Ø8	2	112.4	92.6		105	105	0.4			
	3	Ø8	2	10.4	402.4	10.4	423	846	3.3			
	4	Ø5	25	5	68	5	78	1950		3.1		
Total+10%:											7.8	3.4
Ø5: 0.0											67.1	
Ø8: 161.3											0.0	
Total: 161.3											67.1	

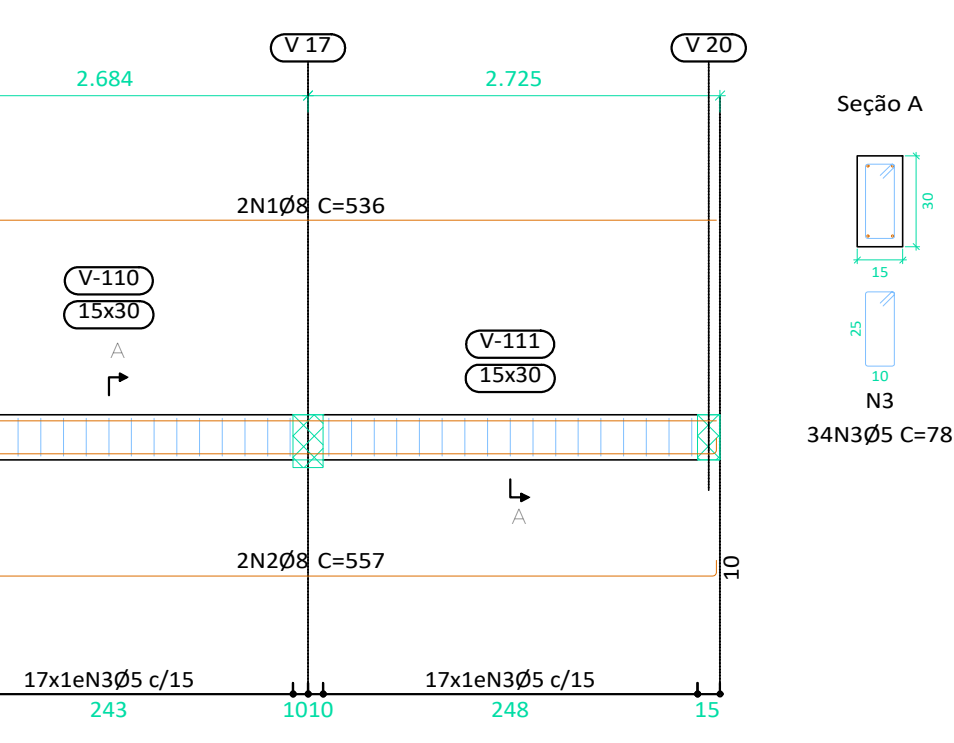
V 1
Escala vigas 1:50
Escala seções 1:25



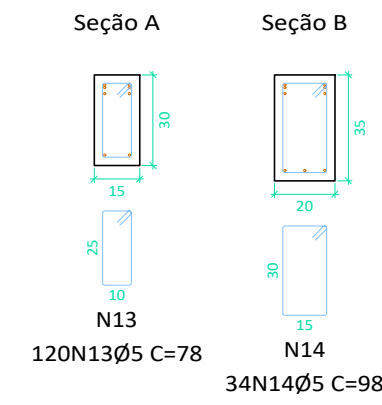
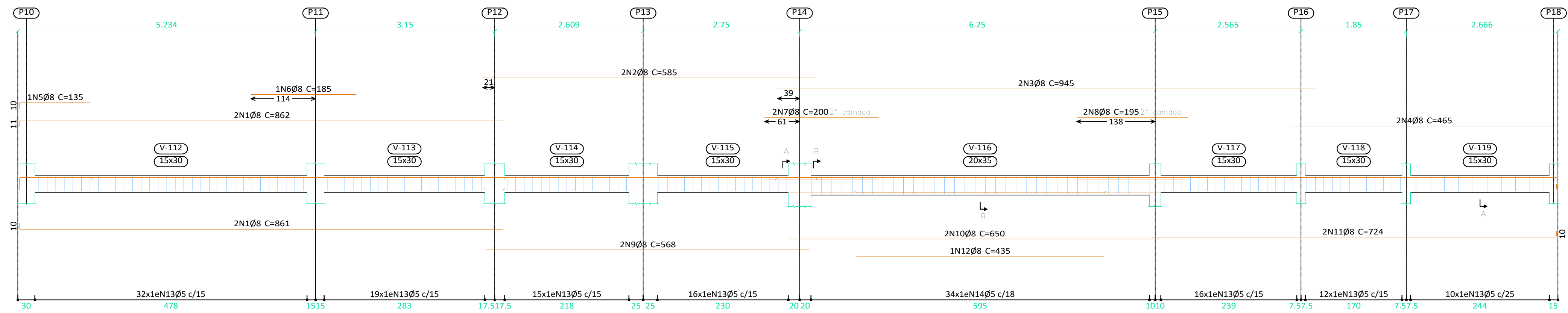
V 2
V 9
Escala vigas 1:50
Escala seções 1:25



V 3
Escala vigas 1:50
Escala seções 1:25



V 4
Escala vigas 1:50
Escala seções 1:25



terreno
Desenho de vigas
Concreto: C25, em geral
Aço das barras: CA-50 e CA-60
Aço dos estribos: CA-50 e CA-60
Escala vigas 1:50
Escala seções 1:25
Escala aberturas 1:25

ATUALIZAÇÃO

CONTRATADA:		CARVALHO AMARAL ENGENHARIA		RESP. TEC. MAX HENRIQUE VELOSO DA SILVA	
CONTRATANTE:		PREF. MUNICIPAL CLARO DOS POÇOS/MG		MUNICÍPIO/ÁREA: CLARO DOS POÇOS/MG	
TÍTULO:		MERCADO MUNICIPAL DE CLARO DOS POÇOS		RESPONSÁVEL CONTRATANTE: PREF. MUNICIPAL DE CLARO DOS POÇOS /MG	
DATA:		04/04/2023		PRANCHA: 05/13	
ARQUIVO:		DE-2022.2079-MG.CLA.-EST-EXE.001=0		ENDEREÇO DA OBRA: AV. TANCREDO NEVES	
EMISSÃO INICIAL		DATA		EXEC. VERIF. APROV.	
DESCRICOÃO		DATA		EXEC. VERIF. APROV.	