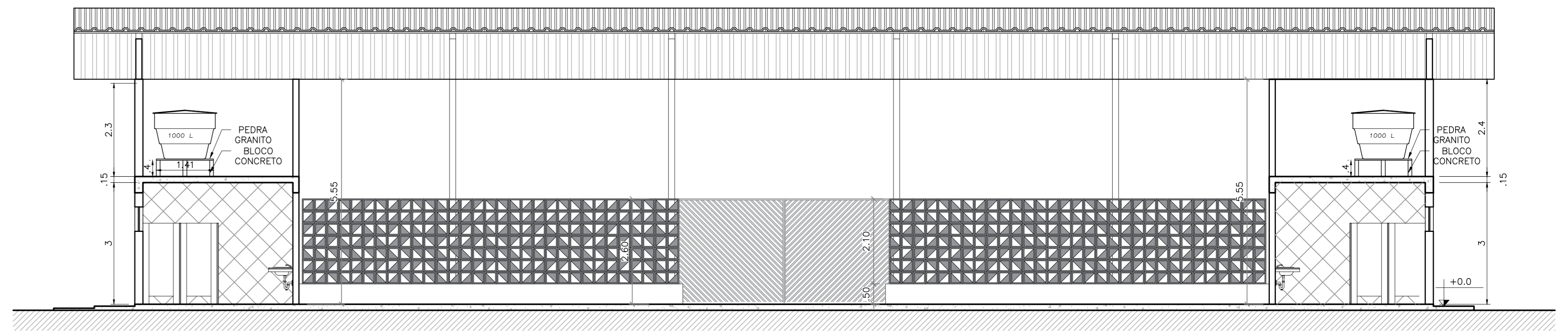
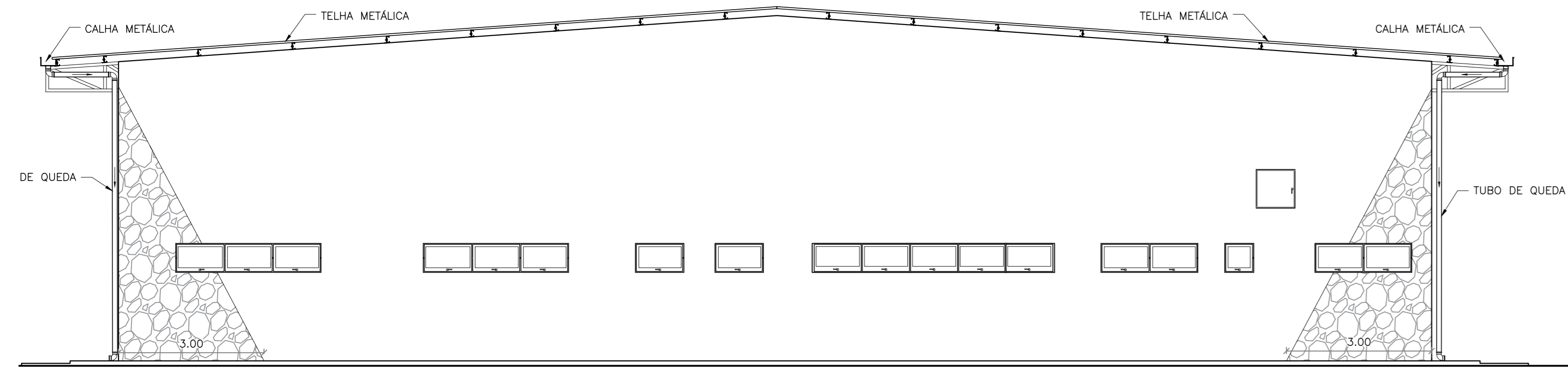




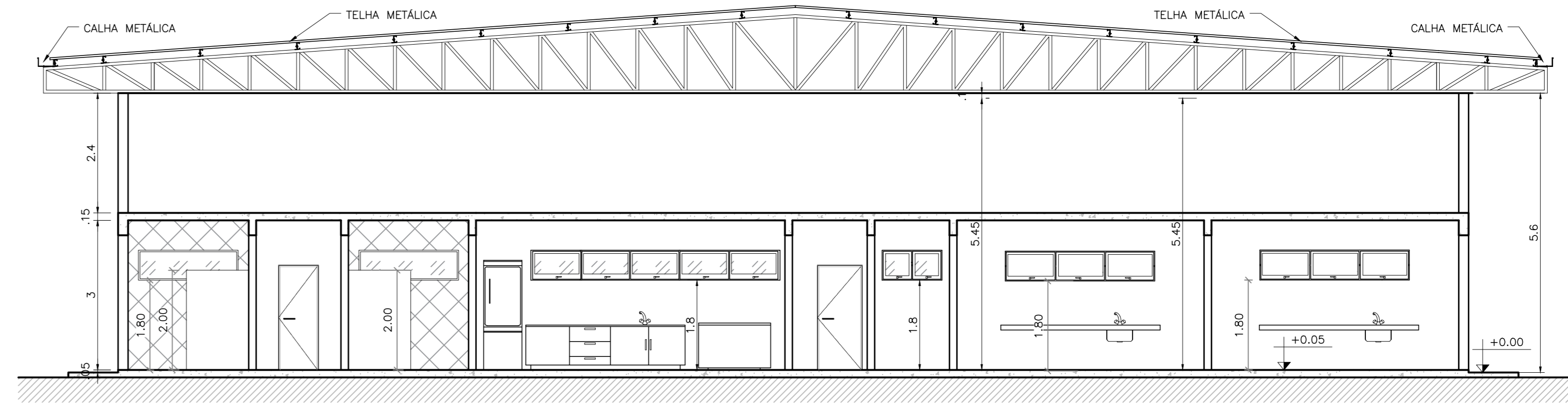
7 FACHADA  
ESCALA 1:75



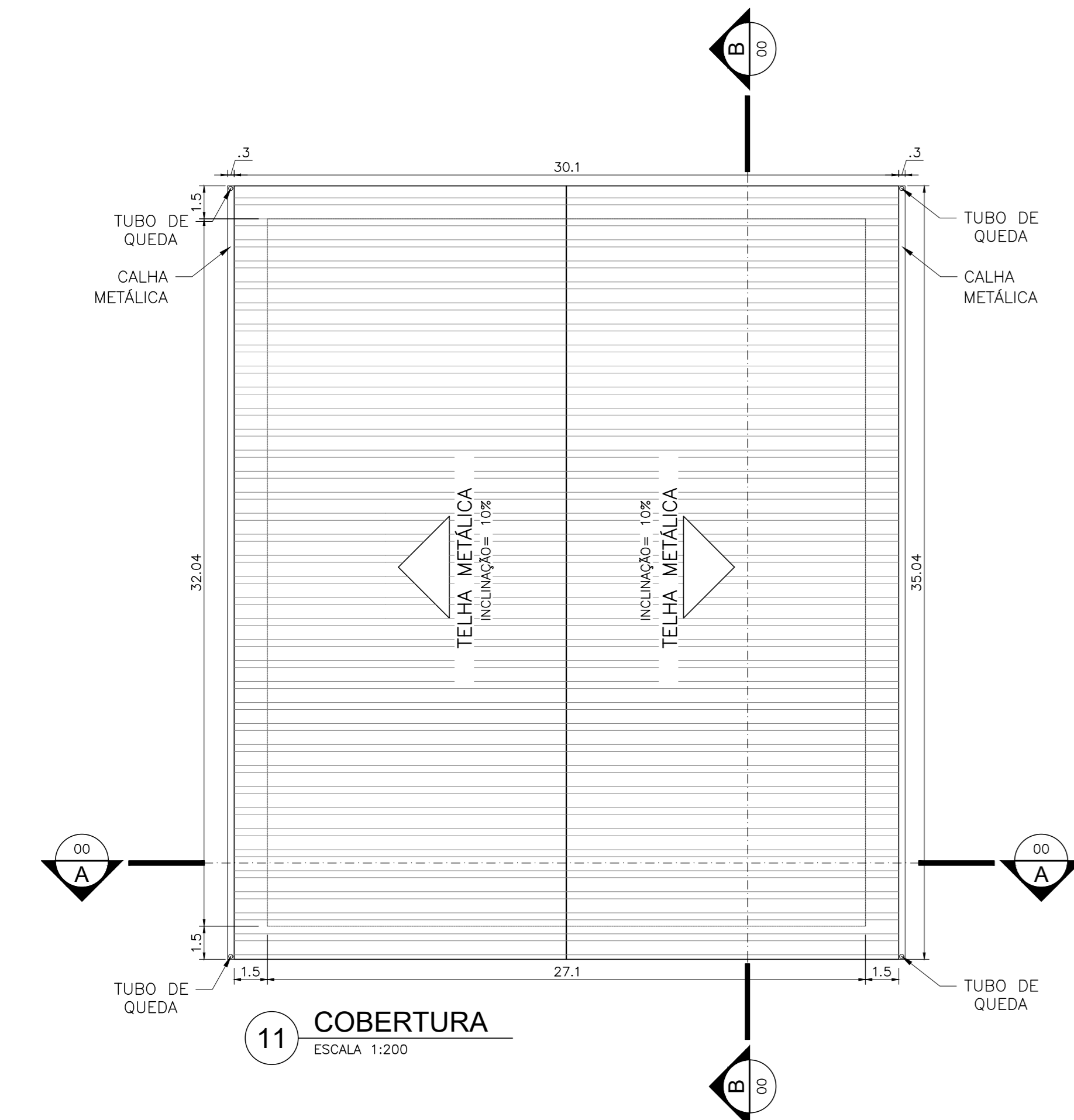
8 CORTE BB  
ESCALA 1:75



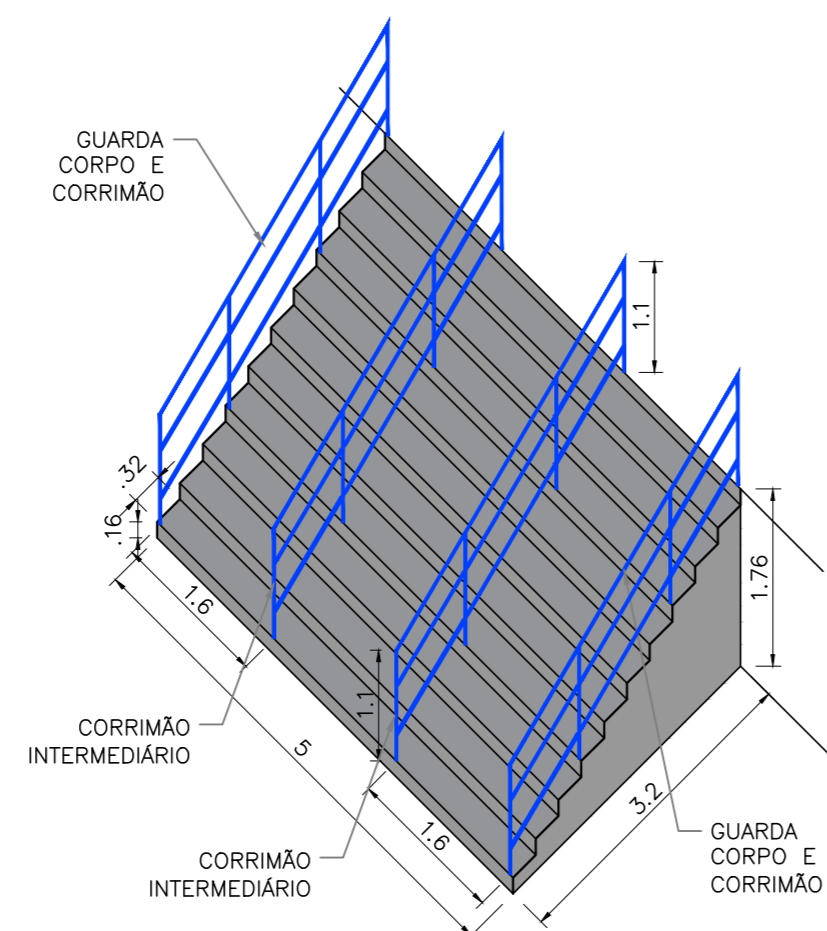
9 FACHADA LATERAL  
ESCALA 1:75



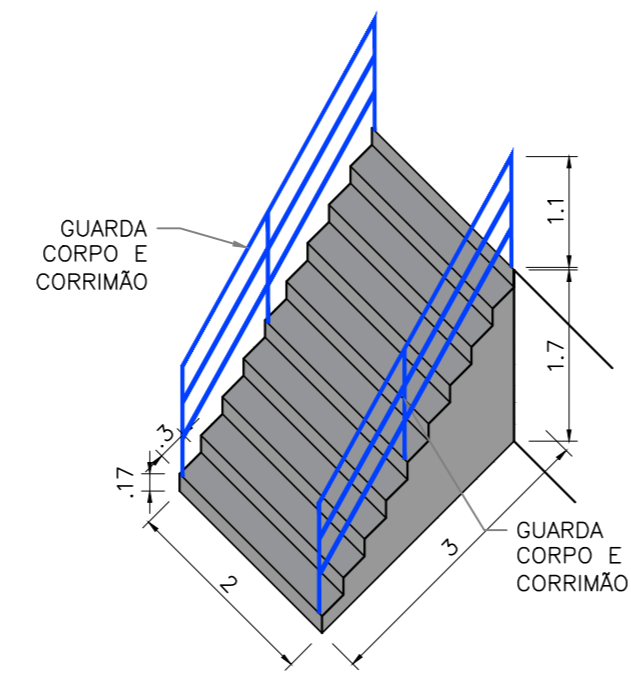
10 CORTE AA  
ESCALA 1:75



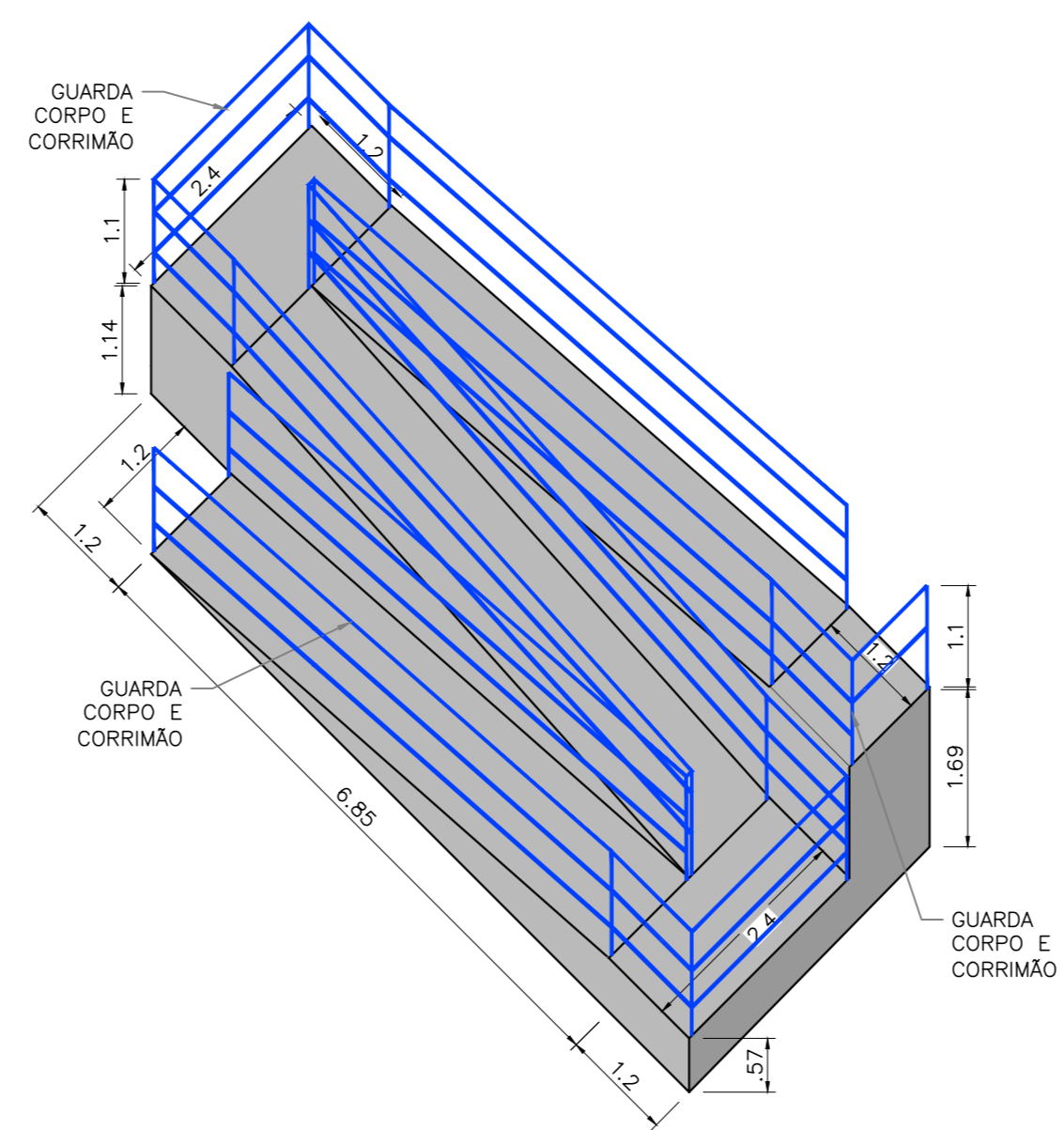
11 COBERTURA  
ESCALA 1:200



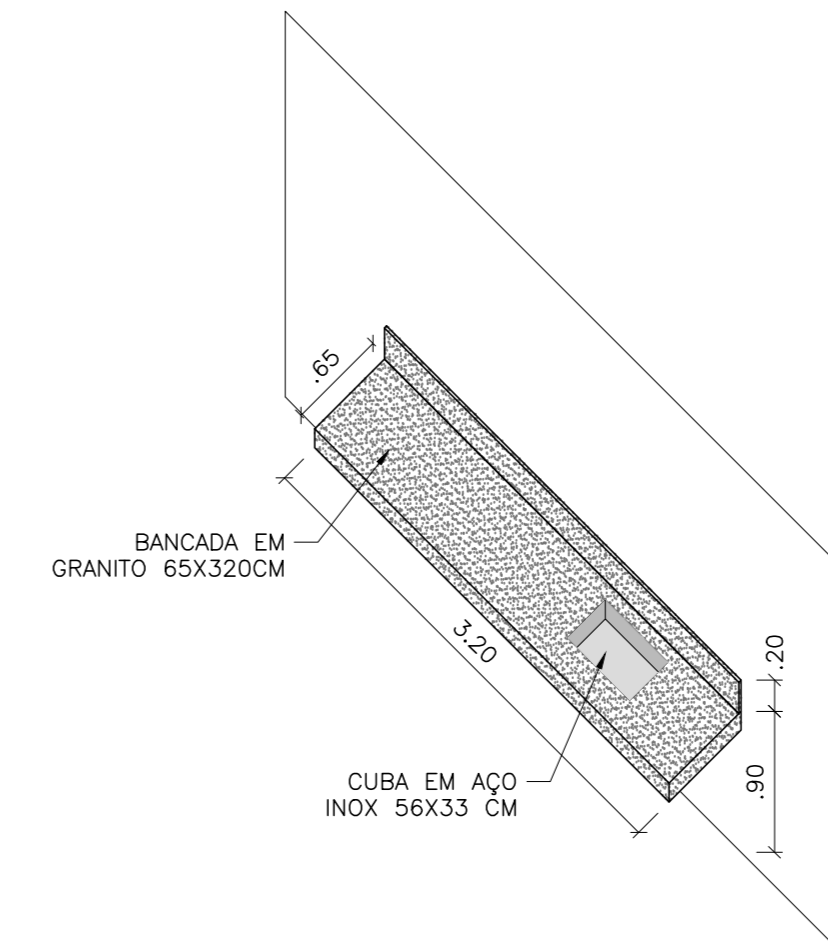
12 ESCADA 01  
ESCALA 1:75



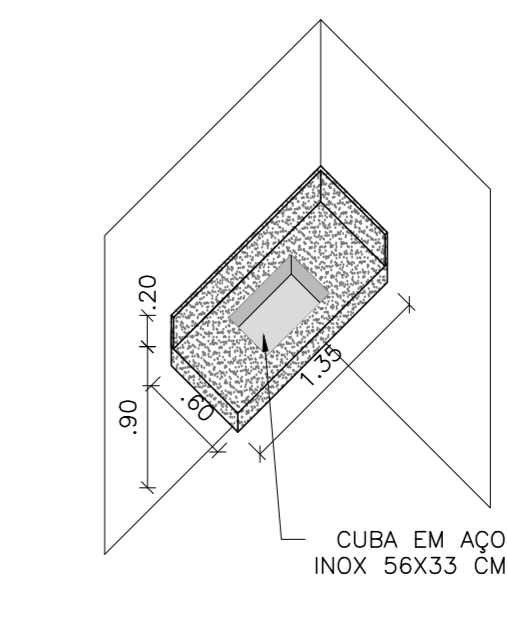
13 ESCADA 02  
ESCALA 1:75



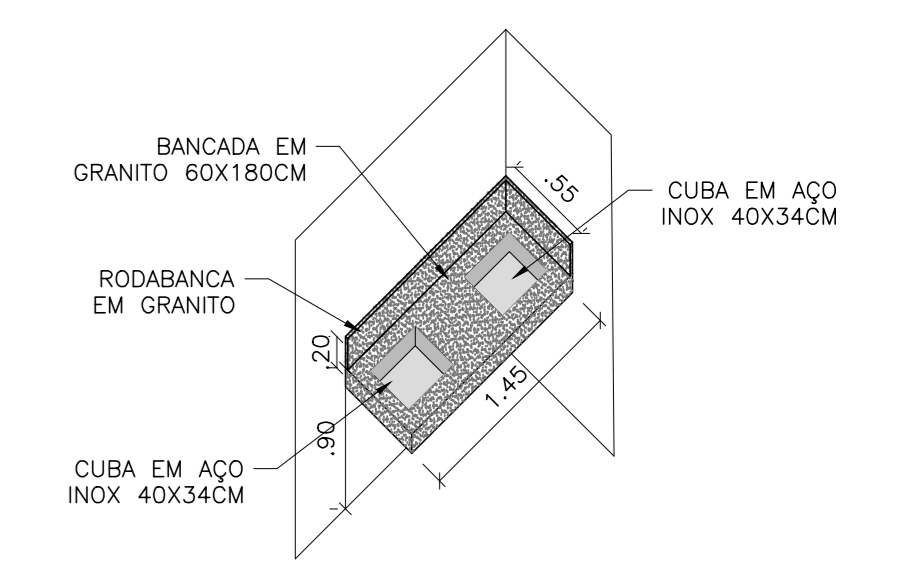
14 RAMPA 01  
ESCALA 1:75



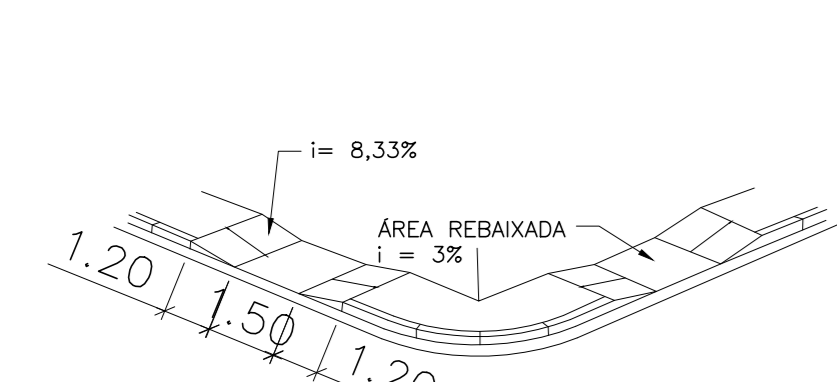
15 BANCADA 1 (B1)  
ESCALA 1:50



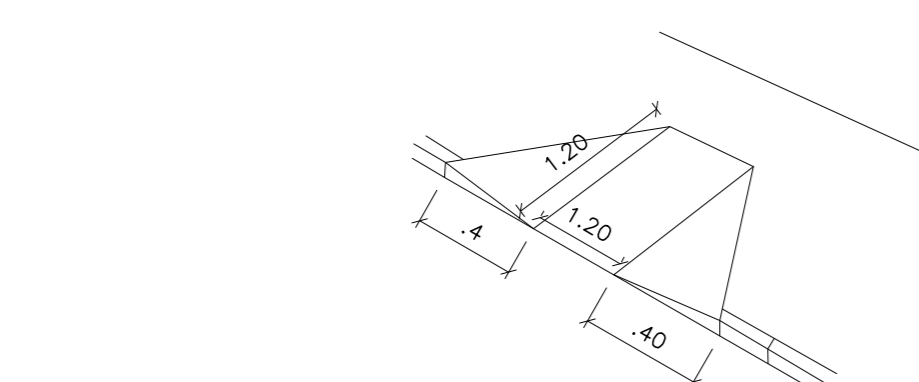
16 BANCADA 2 (B2)  
ESCALA 1:50



17 BANCADA 3 (B3)  
ESCALA 1:50



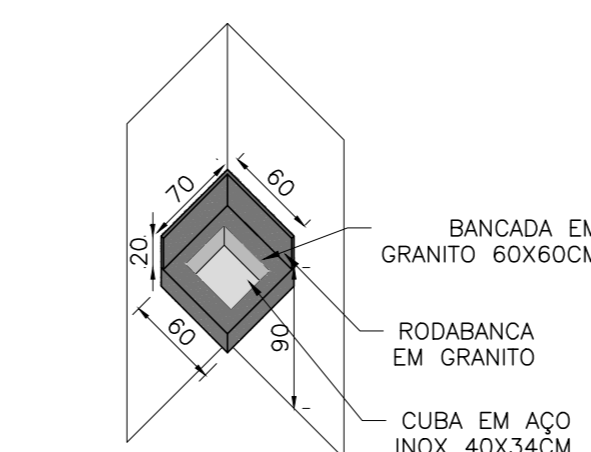
18 PERSPECTIVA RAMPA DE ACESSIBILIDADE  
1:100



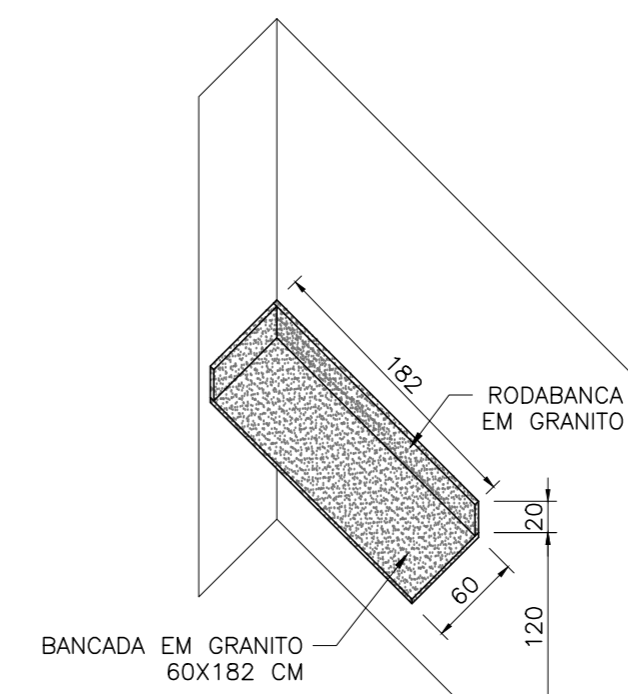
19 PERSPECTIVA RAMPA DE ACESSIBILIDADE  
SEM ESCALA



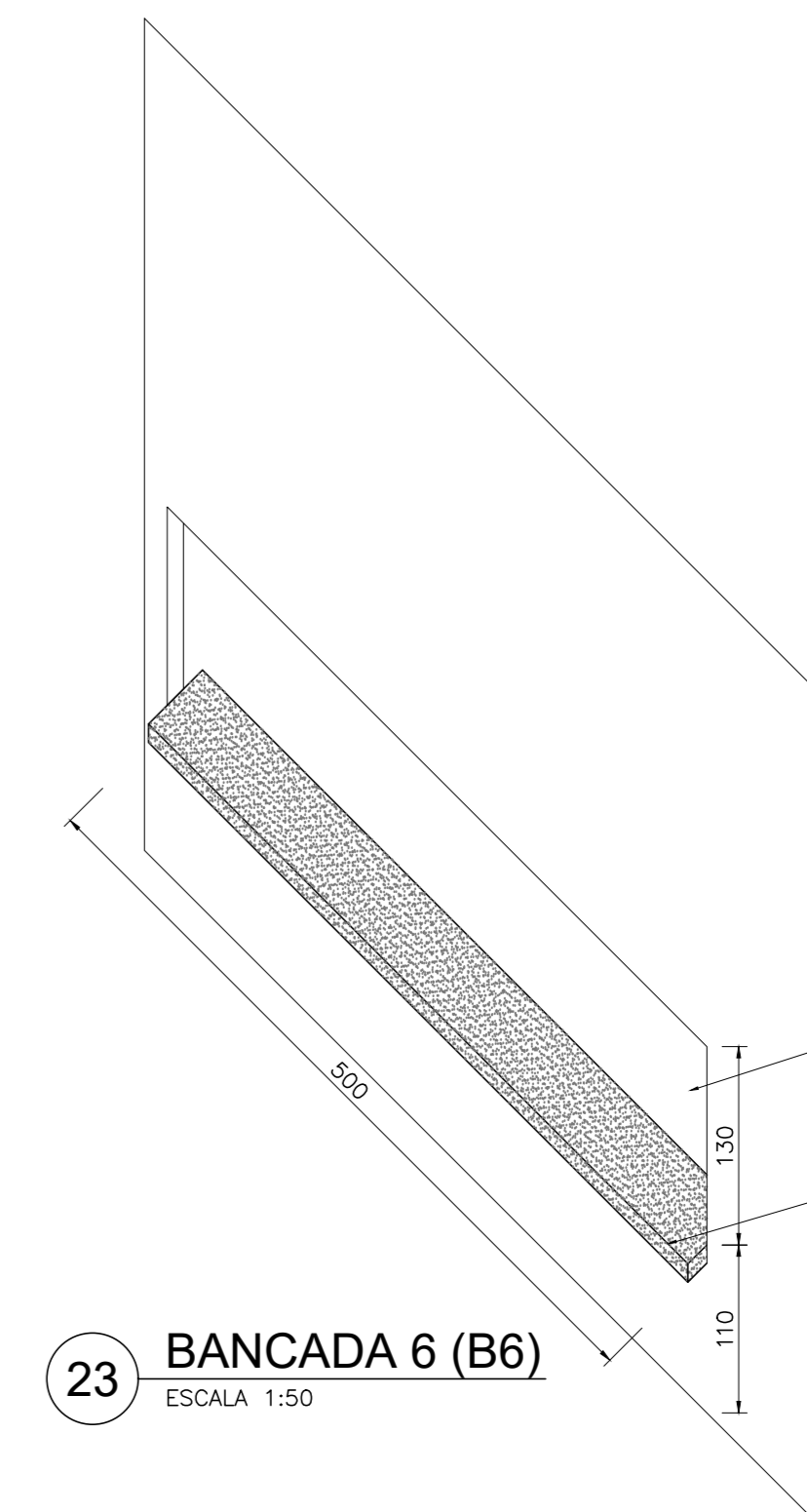
20 PLACA EM ACM  
ESCALA 1:75



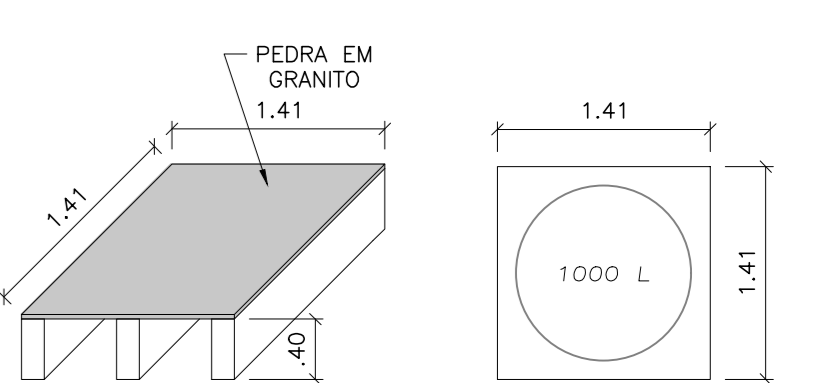
21 BANCADA 4 (B4)  
ESCALA 1:50



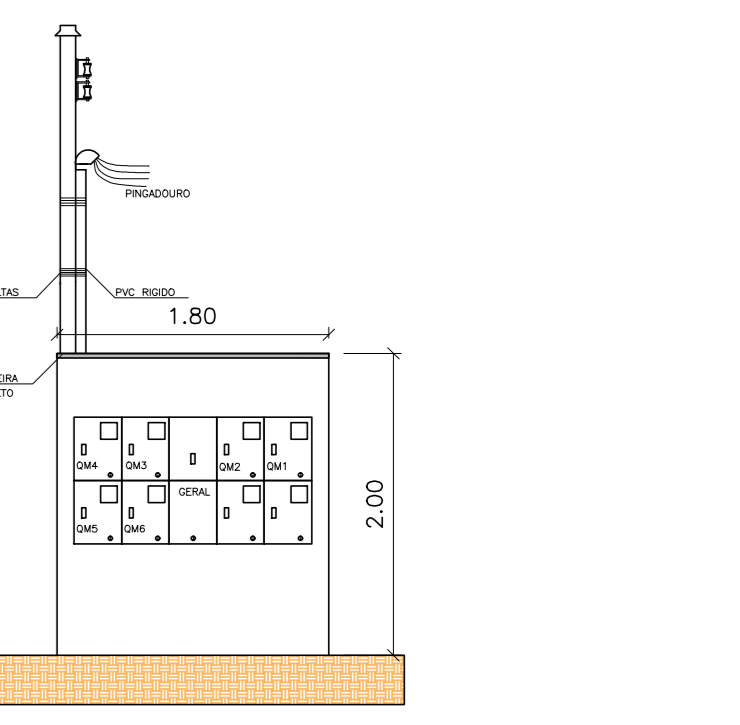
22 BANCADA 5 (B5)  
ESCALA 1:50



23 BANCADA 6 (B6)  
ESCALA 1:50



24 BASE CAIXA D'ÁGUA  
ESCALA 1:50



25 DETALHE ALVENARIA - QM  
ESCALA 1:50

NOTAS

LEGENDA

MAPA-CHAVE

ATUALIZAÇÃO

1 - Medidas em metros

CONTRATADA: C.A. CARVALHO AMARAL ENGENHARIA E ARQUITETURA S.LDA. ÁREA DO PROJETO: 2610,15 m<sup>2</sup>

CONTRATANTE: PREF. MUNICIPAL DE CLARO DOS POÇÕES/MG. RESP. TEC. MAX HENRIQUE VELOSO DA SILVA

TÍTULO: PROJETO ARQUITETÔNICO MERCADO MUNICIPAL DE CLARO DOS POÇÕES FACHADAS; CORTES; DETALHES

DATA: 01/01/2023 ESCALA: INDICADA PRINCHA: 03/03

ARQUIVO: DE-2022.2079-MG.CLA.-ARQ-EXE.001=0

REVISÃO: 01 EMISSÃO INICIAL 13/09/22 K.Y.S.D.

REVISÃO: 02 19/04/22 K.Y.S.D.

REVISÃO: 03 DATA EXEC. VERIF. APPROV.