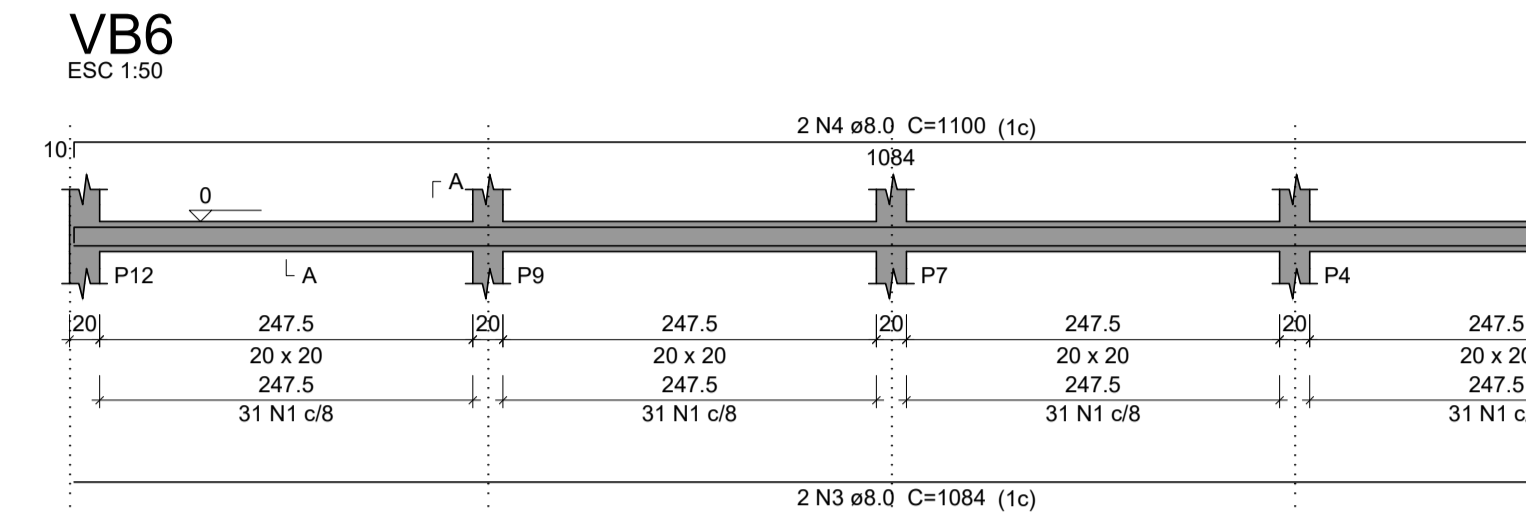
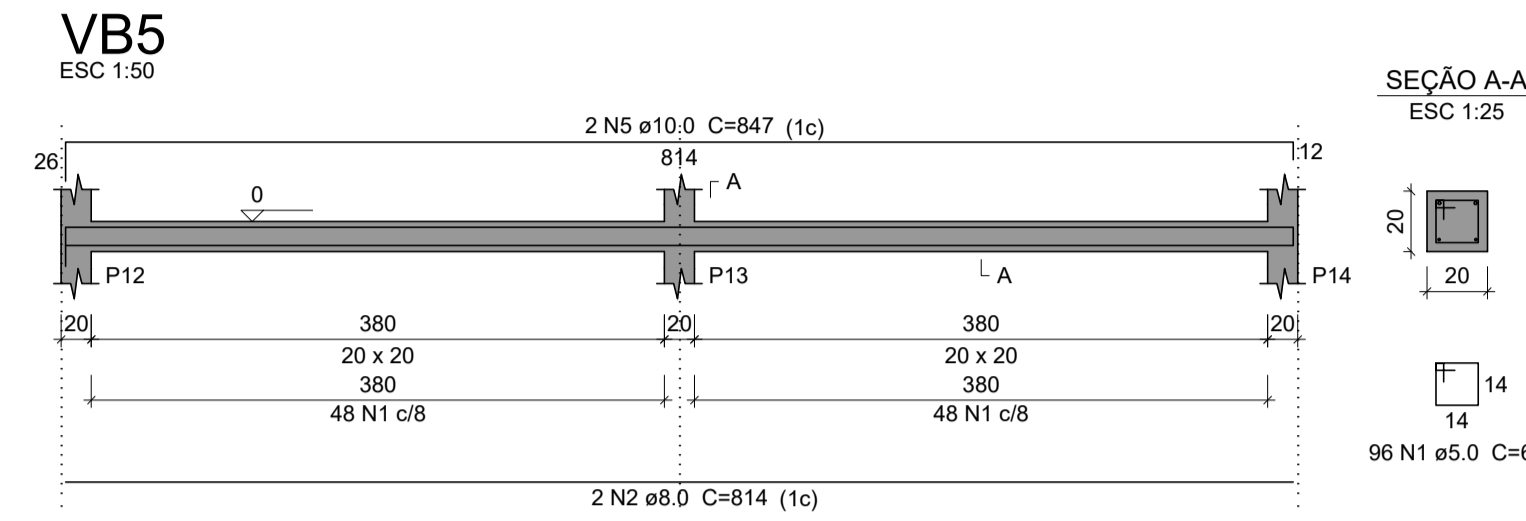
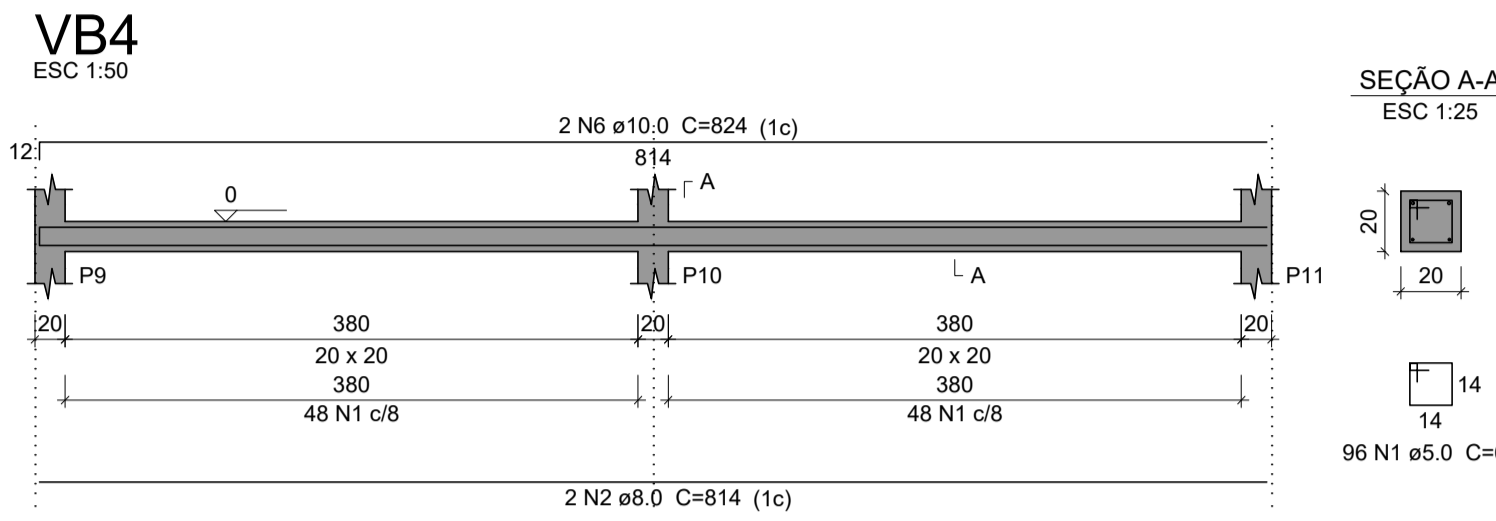


Relação do aço

ACO	N	DIAM (mm)	QUANT	C.UNIT (cm)	C.TOTAL (cm)
CA60	1	5.0	855	68	58140
CA50	2	8.0	10	814	8140
	3	8.0	6	1084	6504
	4	8.0	4	1100	4400
	5	10.0	4	847	3388
	6	10.0	4	824	3296
	7	10.0	2	854	1708
	8	10.0	2	1084	2168



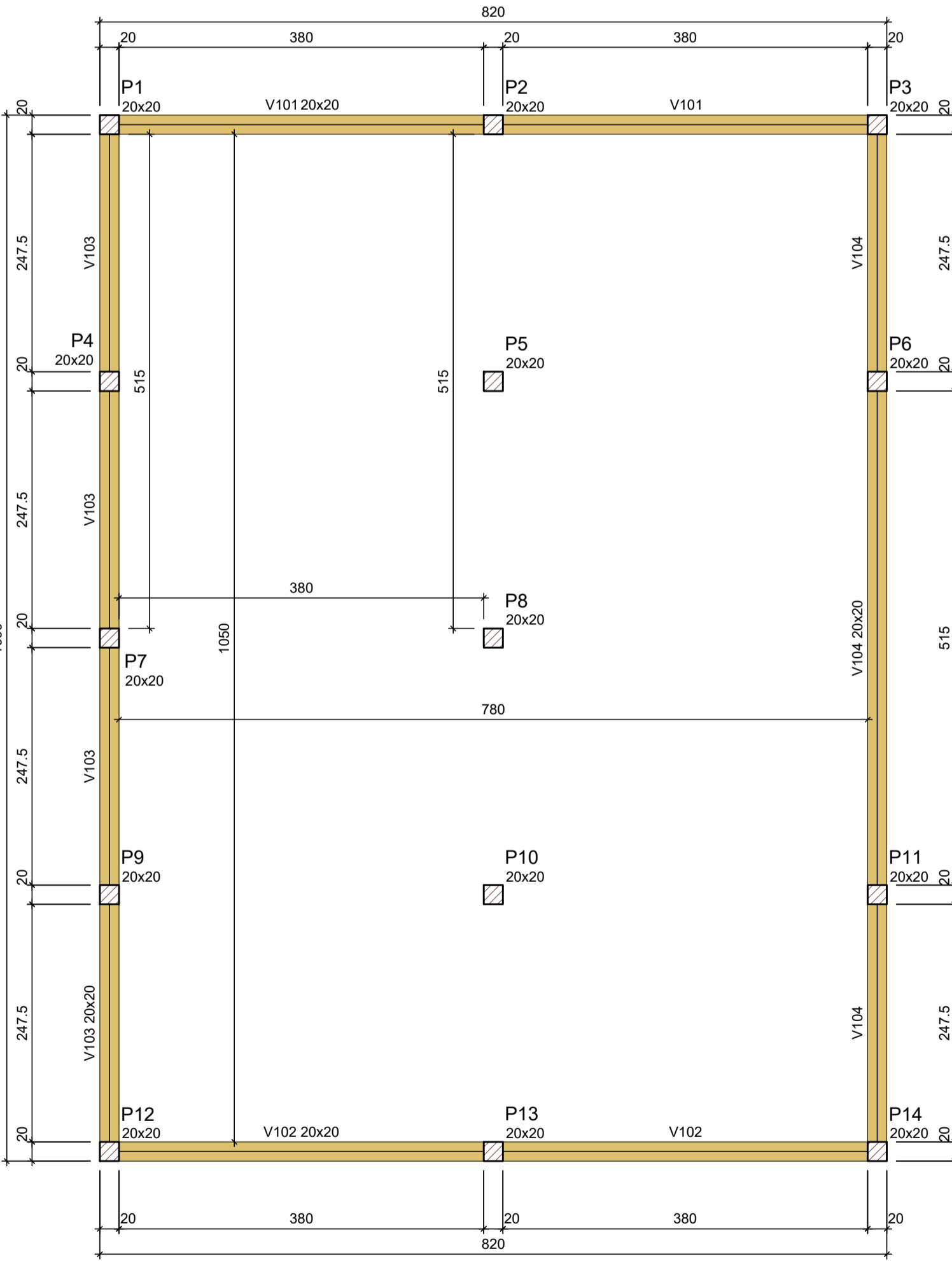
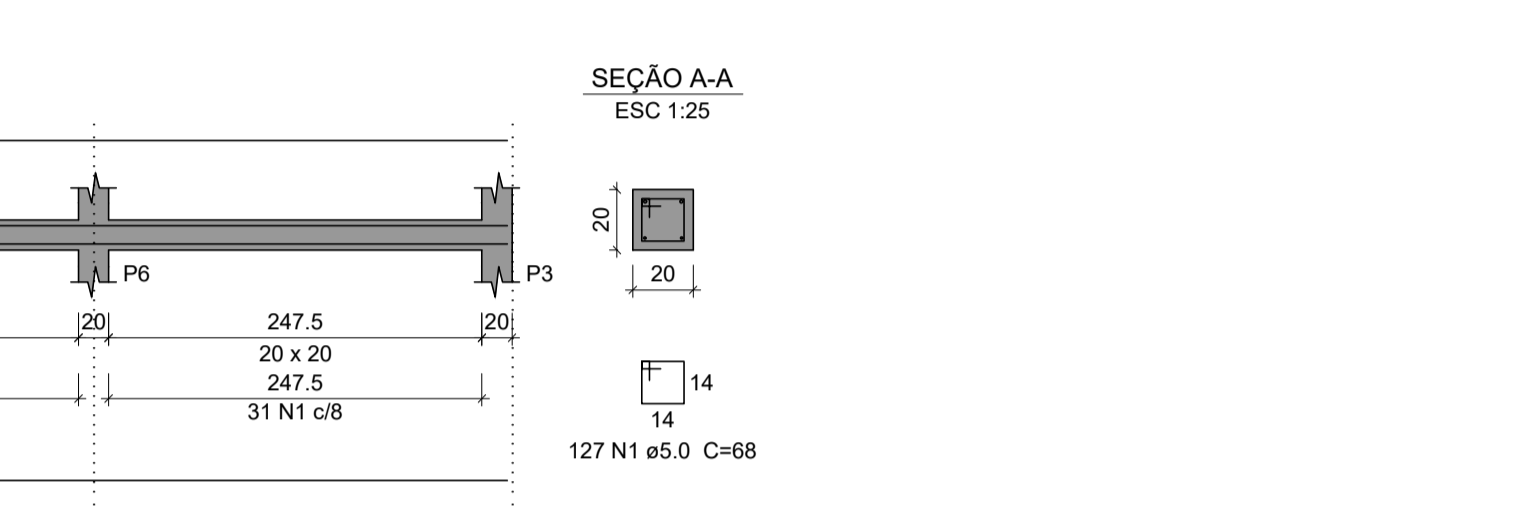
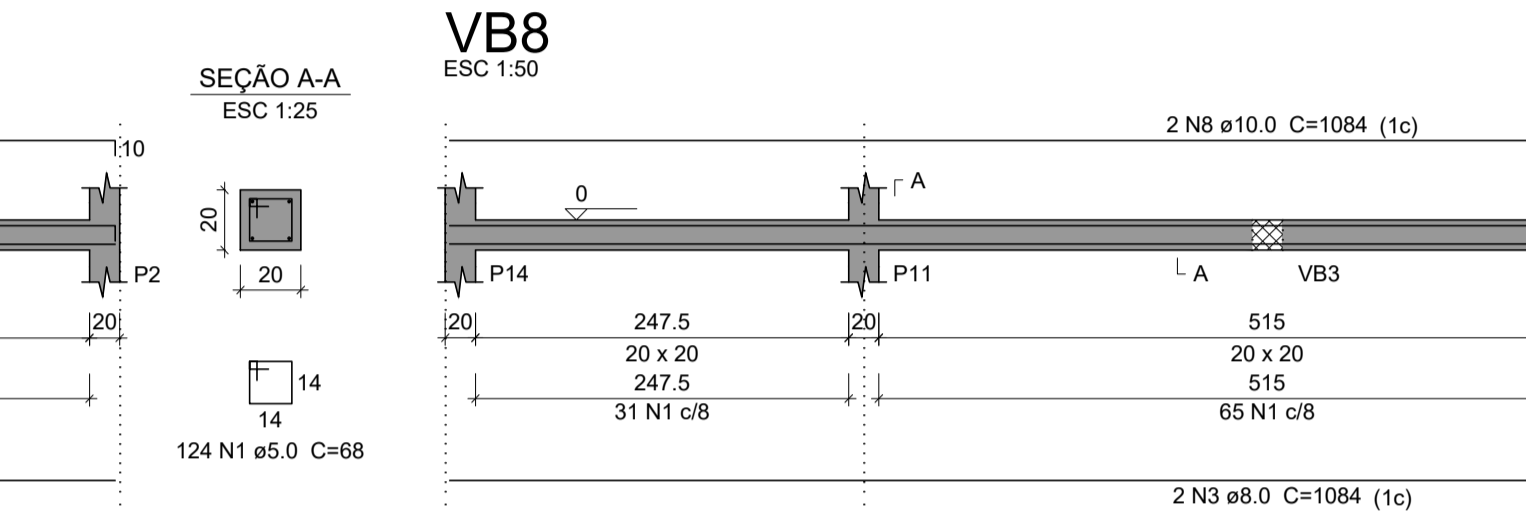
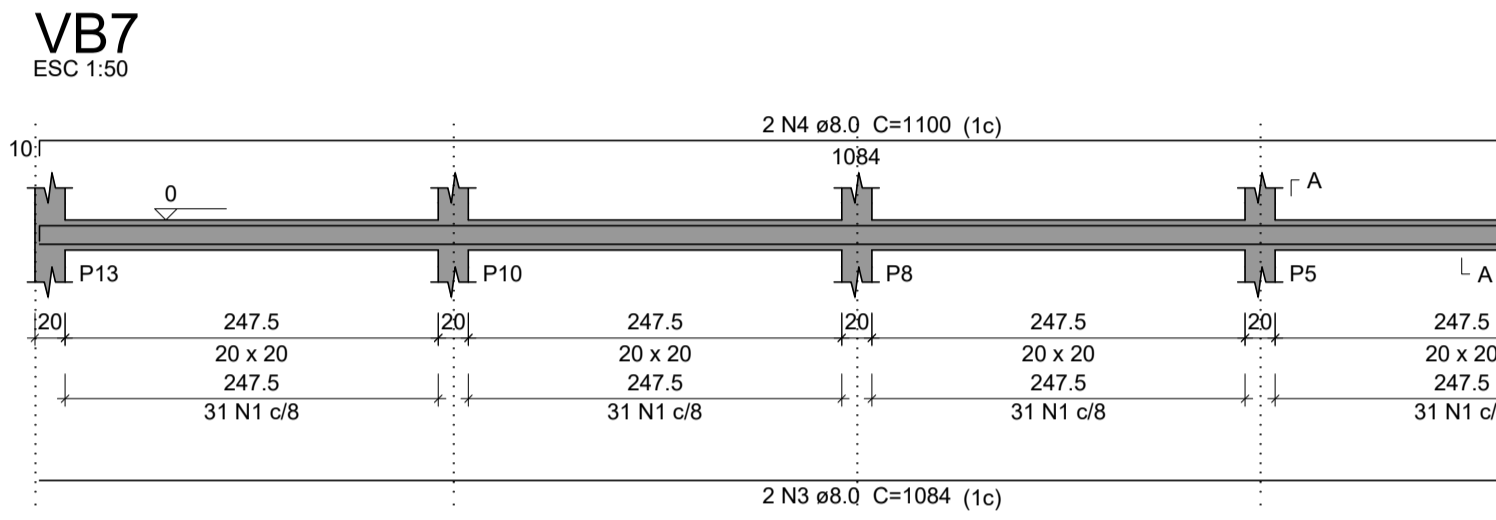
Resumo do aço

ACO	DIAM (mm)	C.TOTAL (m)	PESO + 10% (kg)
CA50	8.0	190.5	82.7
CA60	10.0	105.6	71.6
CA60	5.0	581.4	98.6

PESO TOTAL (kg)

CA50	154.3
CA60	98.6

Volume de concreto (C-25) = 2.72 m³
Área de forma = 40.8 m²



Vigas

Nome	Seção (cm)	Elevação (cm)	Nível (cm)
V101	20x20	0	85
V102	20x20	0	85
V103	20x20	0	85
V104	20x20	0	85

Características dos materiais

fc	Ecs
250	241500

Dimensão máxima do agregado = 19 mm

Pilares

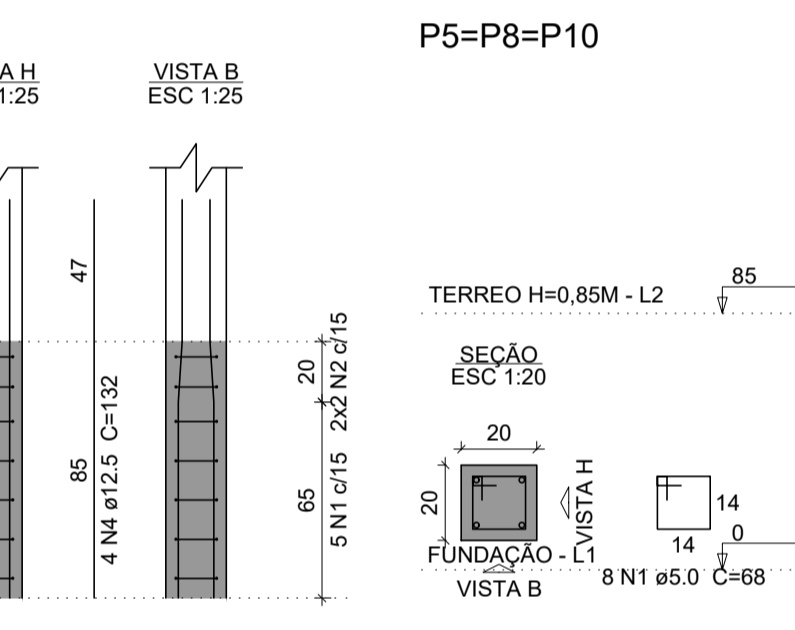
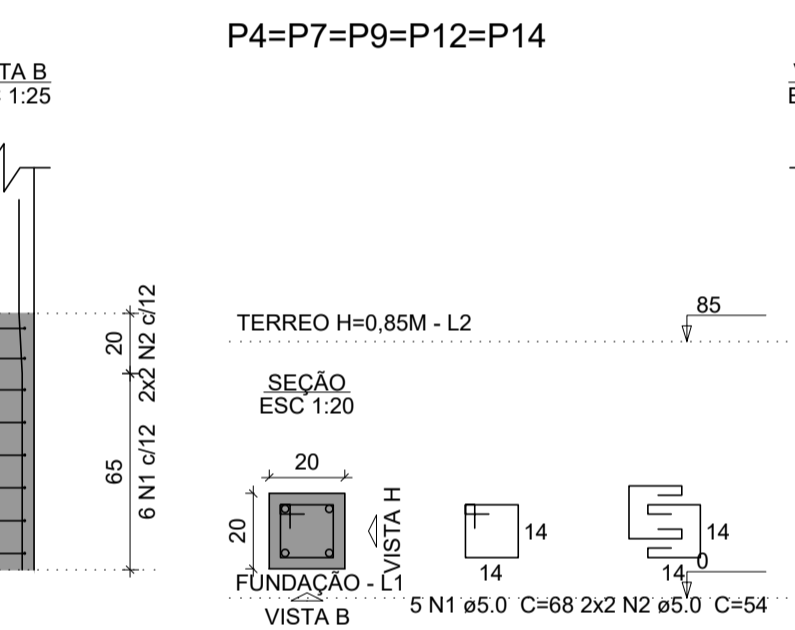
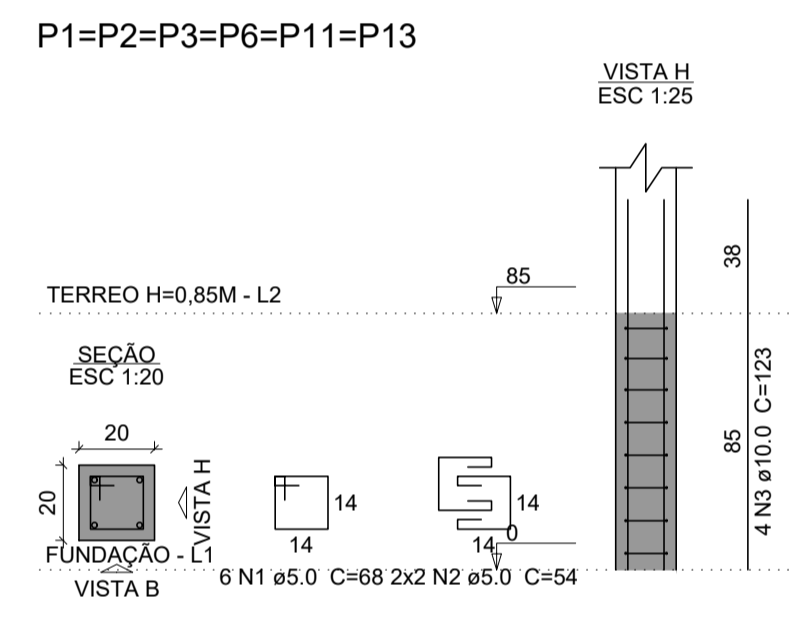
Nome	Seção (cm)	Elevação (cm)	Nível (cm)
P1	20x20	0	85
P2	20x20	0	85
P3	20x20	0	85
P4	20x20	0	85
P5	20x20	0	85
P6	20x20	0	85
P7	20x20	0	85
P8	20x20	0	85
P9	20x20	0	85
P10	20x20	0	85
P11	20x20	0	85
P12	20x20	0	85
P13	20x20	0	85
P14	20x20	0	85

Legenda dos pilares

▣ Pilar que passa

Legenda das vigas e paredes

▬ Viga



Relação do aço

ACO	N	DIAM (mm)	QUANT	C.UNIT (cm)	C.TOTAL (cm)
CA60	1	5.0	85	68	5780
CA50	2	5.0	44	54	2376
CA50	3	10.0	36	123	4428
CA50	4	12.5	20	132	2640

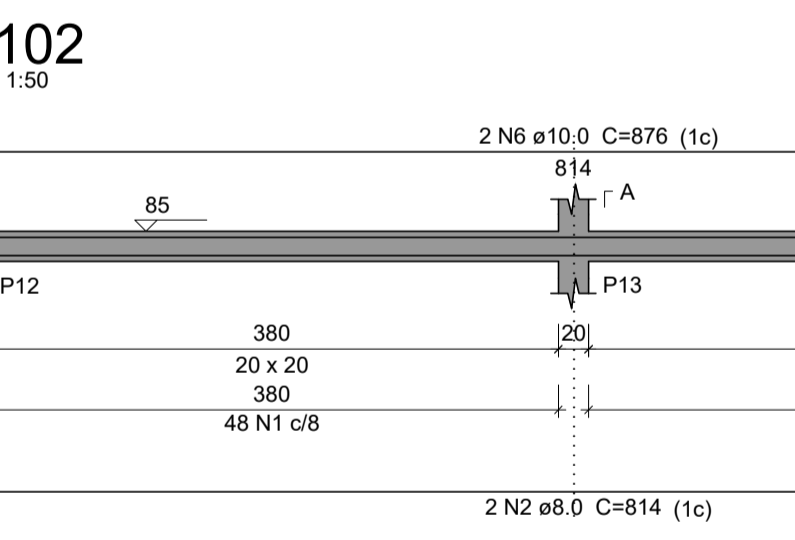
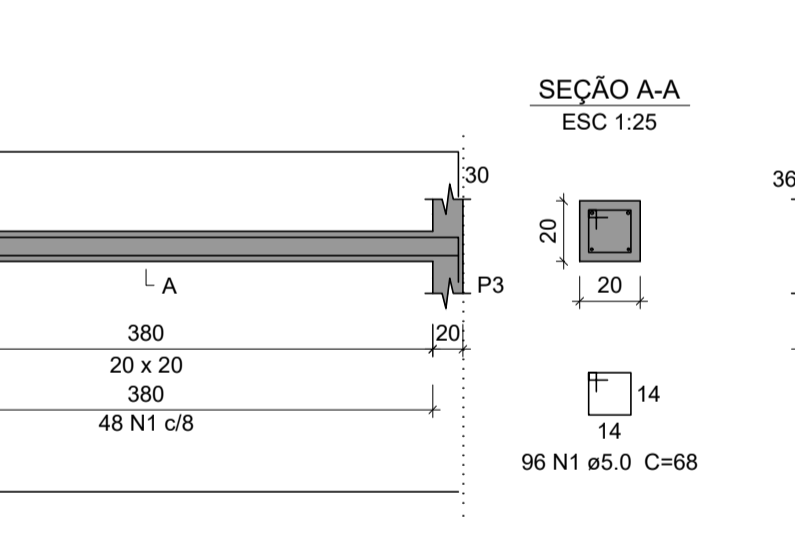
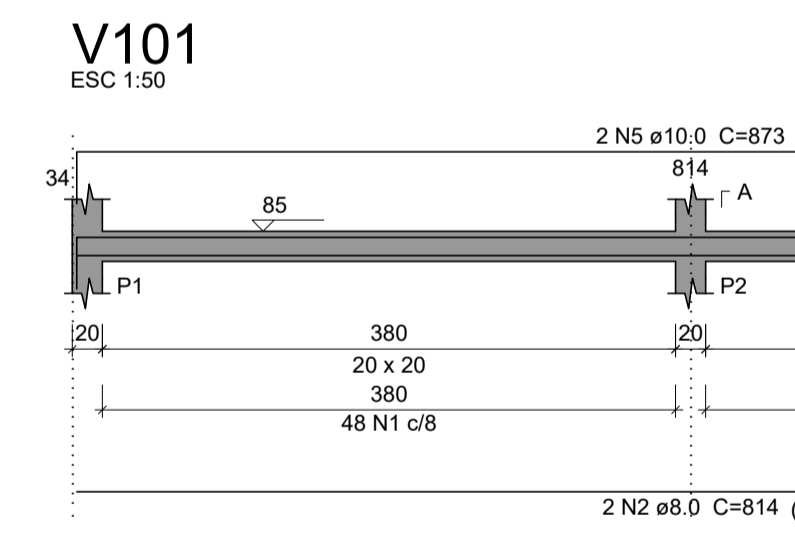
Resumo do aço

ACO	DIAM (mm)	C.TOTAL (m)	PESO + 10% (kg)
CA50	10.0	44.3	30
CA60	5.0	26.4	28
CA60	5.0	81.6	13.8

PESO TOTAL (kg)

CA50	58
CA60	13.8

Volume de concreto (C-25) = 0.48 m³
Área de forma = 9.52 m²



Relação do aço

ACO	N	DIAM (mm)	QUANT	C.UNIT (cm)	C.TOTAL (cm)
CA60	1	5.0	443	68	30124
CA50	2	8.0	4	814	3256
	3	8.0	4	1084	4336
	4	8.0	2	1100	2200
	5	10.0	2	873	1746
	6	10.0	2	876	1752
	7	12.5	2	1084	2168

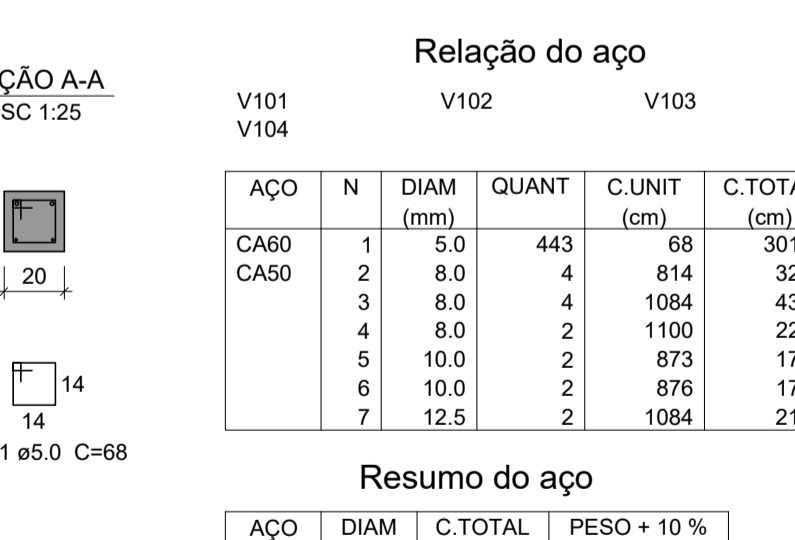
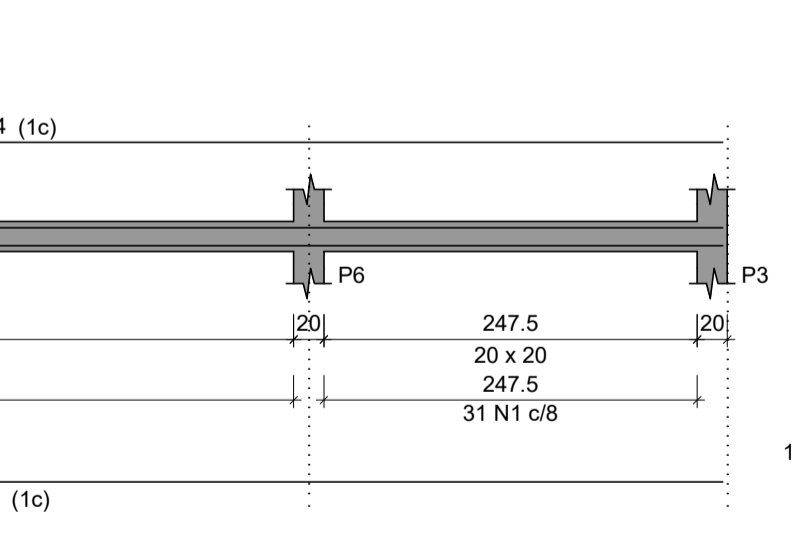
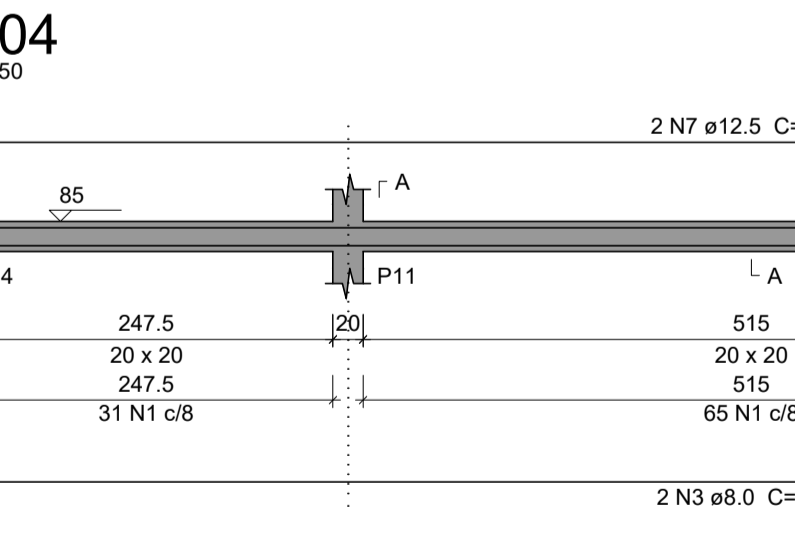
Resumo do aço

ACO	DIAM (mm)	C.TOTAL (m)	PESO + 10% (kg)
CA50	8.0	98	42.5
	10.0	35	23.7
	12.5	21.7	23
CA60	5.0	301.3	51.1

PESO TOTAL (kg)

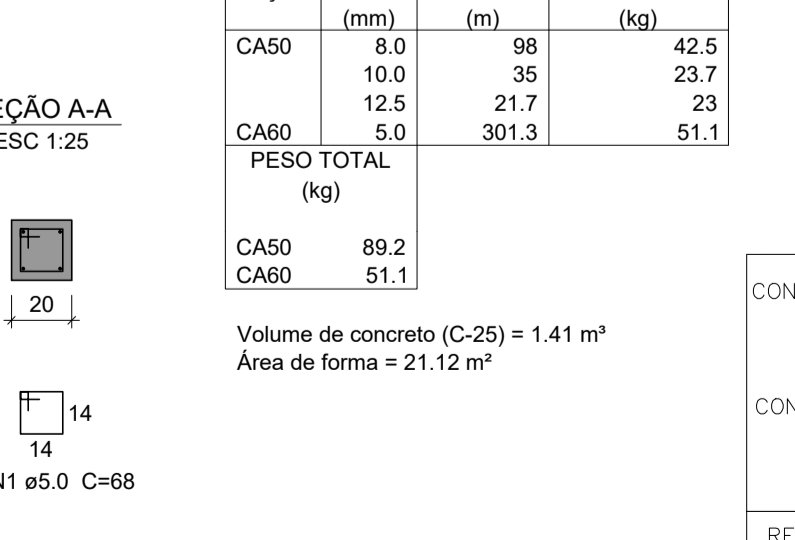
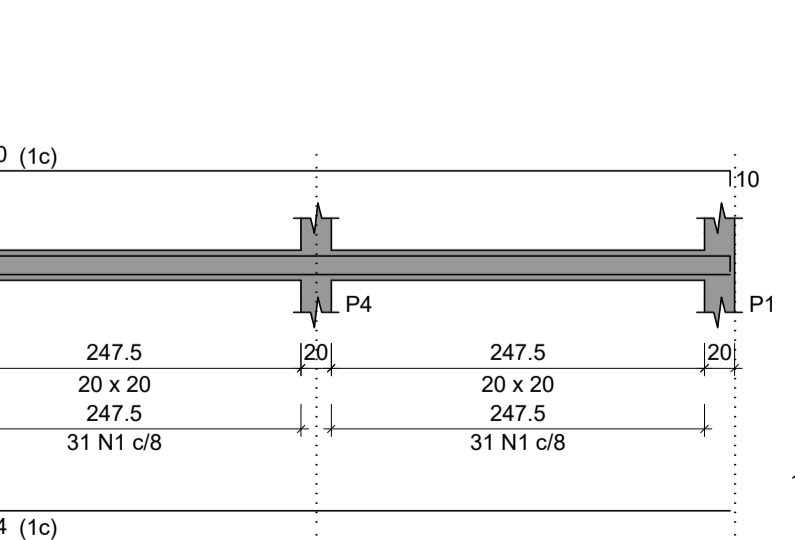
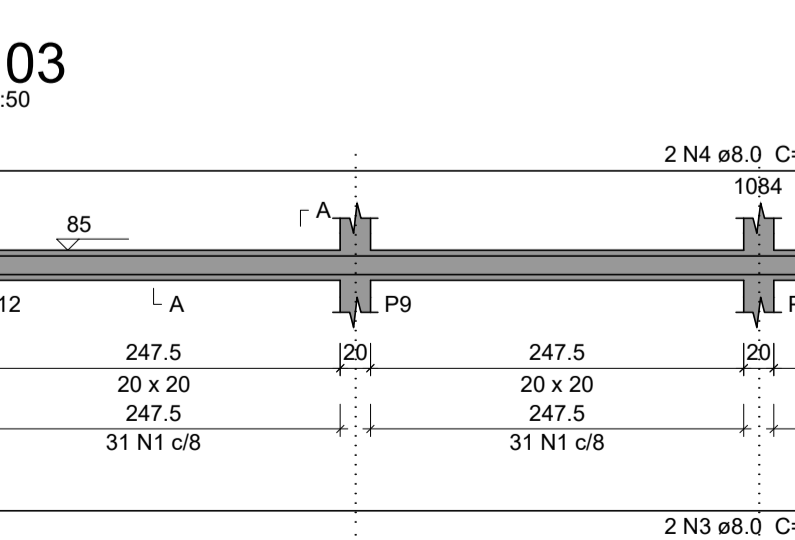
CA50	89.2
CA60	51.1

Volume de concreto (C-25) = 1.41 m³
Área de forma = 21.12 m²



Relação do aço

ACO	N	DIAM (mm)	QUANT	C.UNIT (cm)	C.TOTAL (cm)
CA60	1	5.0	443	68	30124
CA50	2	8.0	4	814	3256
	3	8.0	4	1084	4336
	4	8.0	2	1100	2200
	5	10.0	2	873	1746
	6	10.0	2	876	1752
	7	12.5	2	1084	2168



Relação do aço

ACO	N	DIAM (mm)	QUANT	C.UNIT (cm)	C.TOTAL (cm)
CA60	1	5.0	443	68	30124
CA50	2	8.0	4	814	3256
	3	8.0	4	1084	4336
	4	8.0	2	1100	2200
	5	10.0	2	873	1746
	6	10.0	2	876	1752
	7	12.5	2	1084	2168

Forma do pavimento TERREO H=0,85M (Nível 85)

escala 1:50

CONTRATANTE: PREFEITURA MUNICIPAL DE CLARO DOS POÇOS/MG
CNPJ Nº: 23.539.463/0001-21
Rua Coimbra, 51
Centro, Claro dos Poços/MG,
CEP: 38.350-000

CONTRATADA: CARVALHO AMARAL ENGENHARIA
CNPJ Nº: 16.783.066/0001-35
Avenida Mestre Firmino, nº 726
1º andar, Centro, Montes Claros/MG,
CEP: 38401-074

PROJETO ESTRUTURAL
REFORMA E AMPLIAÇÃO DE UNIDADE BÁSICA DE SAÚDE
DETALHAMENTO DE VIGAS BALDRAME FUNDAÇÃO,
FORMA TERREO NÍVEL 0,85M, PILARES E VIGAS NÍVEL 0,85M

RESPONSÁVEL TÉCNICO: MAX HENRIQUE VELOSO DA SILVA CREA: 248.998/D

MUNICÍPIO/ÁREA: MUNICÍPIO DE CLARO DOS POÇOS/MG

ENDEREÇO DA OBRA: AVENIDA ILDO HORTA S/N

DATA: 18/01/2023 ESCALA: INDICADA PRANCHA:

ARQUIVO: DE-2023.2369-MG.CLA-ARQ-EXE.001=0 03/05