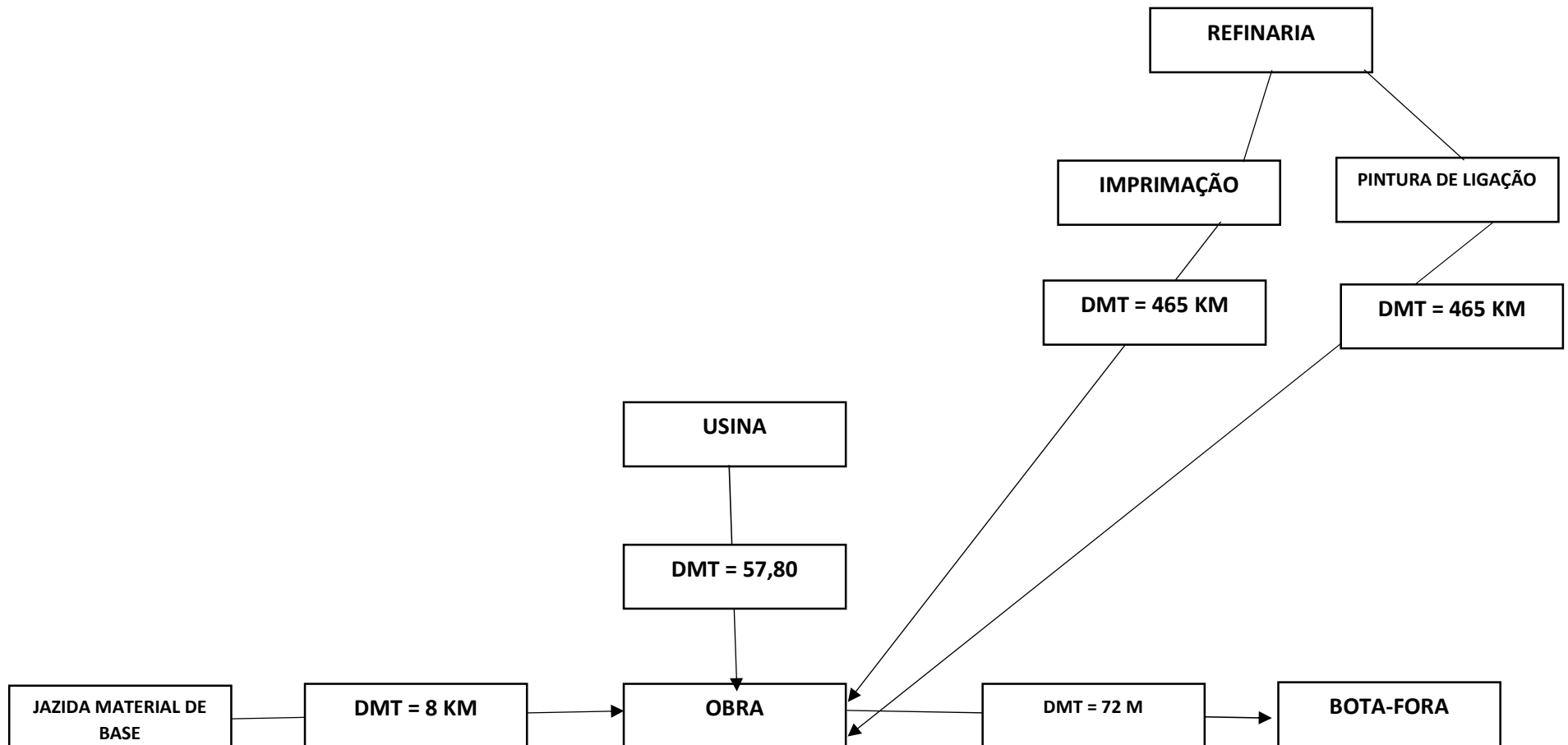
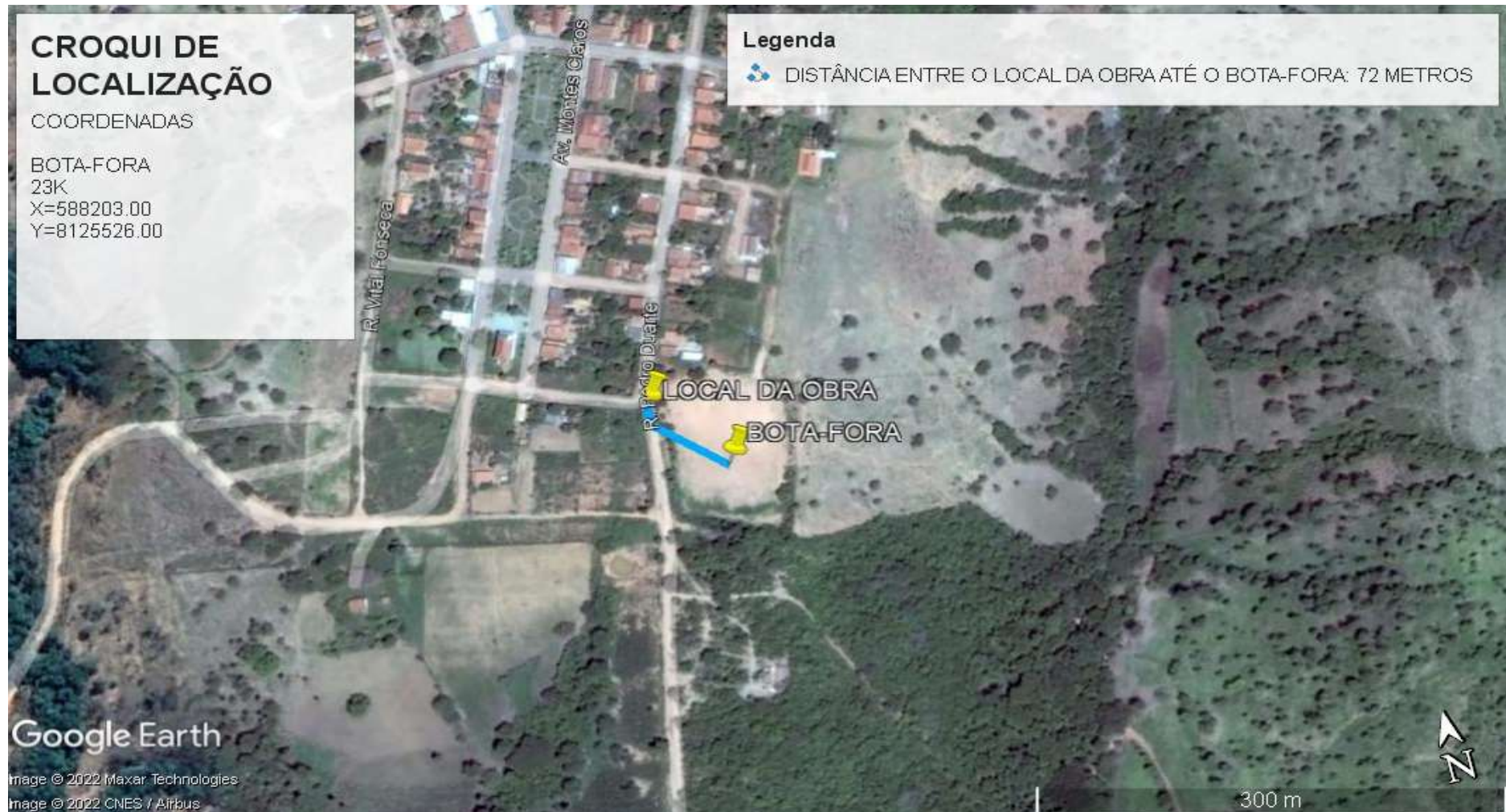


CROQUI DE LOCALIZAÇÃO – DMT – ZONA RURAL DO DISTRITO DE BOA SORTE, MUNICÍPIO DE CLARO DOS POÇÕES - MG



BOTA FORA



TOTAL: 72 METROS

RR-2C E CM-30

The image shows a Google Maps interface with a route from Refinaria Gabriel Passos (Regap) to Boa Sorte. The sidebar on the left contains the following elements:

- Navigation icons: Car, Bus, Pedestrian, Bicycle, and Airplane.
- Search bar: "Refinaria Gabriel Passos (Regap), Av. Ref"
- Destination: "Boa Sorte - Vista Alegre, Claro dos Poço"
- Option: "Adicionar destino"
- Start button: "Partir agora" with a dropdown arrow.
- Option: "Opções"
- Feature: "Enviar direções para o seu telemóvel"
- Route 1: "por BR-496 e BR-365" with a duration of "6 h 22 min" and distance of "465 km". It includes a note: "Trajeto mais rápido agora devido às condições de trânsito" and two warning icons: "Este trajeto inclui portagens." and "Este trajeto tem utilização restrita ou estradas privadas." Below this is a link for "Detalhes".
- Route 2: "por BR-135" with a duration of "6 h 45 min" and distance of "470 km".

The map displays three routes:

- A blue route (BR-496 and BR-365) with a duration of 6 h 22 min and distance of 465 km.
- A grey route (BR-135) with a duration of 6 h 45 min and distance of 470 km.
- A grey route (BR-135) with a duration of 7 h 27 min and distance of 561 km.

The map also shows various locations such as Unai, Paracatu, Patos de Minas, Araxá, Curvelo, Sete Lagoas, Diamantina, Ipatinga, Gov. Valadares, Teófilo Otoni, Araçuaí, Itaobim, and Montes Claros. The bottom navigation bar includes "Camadas", "Dados do mapa ©2022 Google", "Brasil", "Termos de Utilização", "Privacidade", "Enviar feedback", and a scale of "50 km".

TOTAL= 465 KM

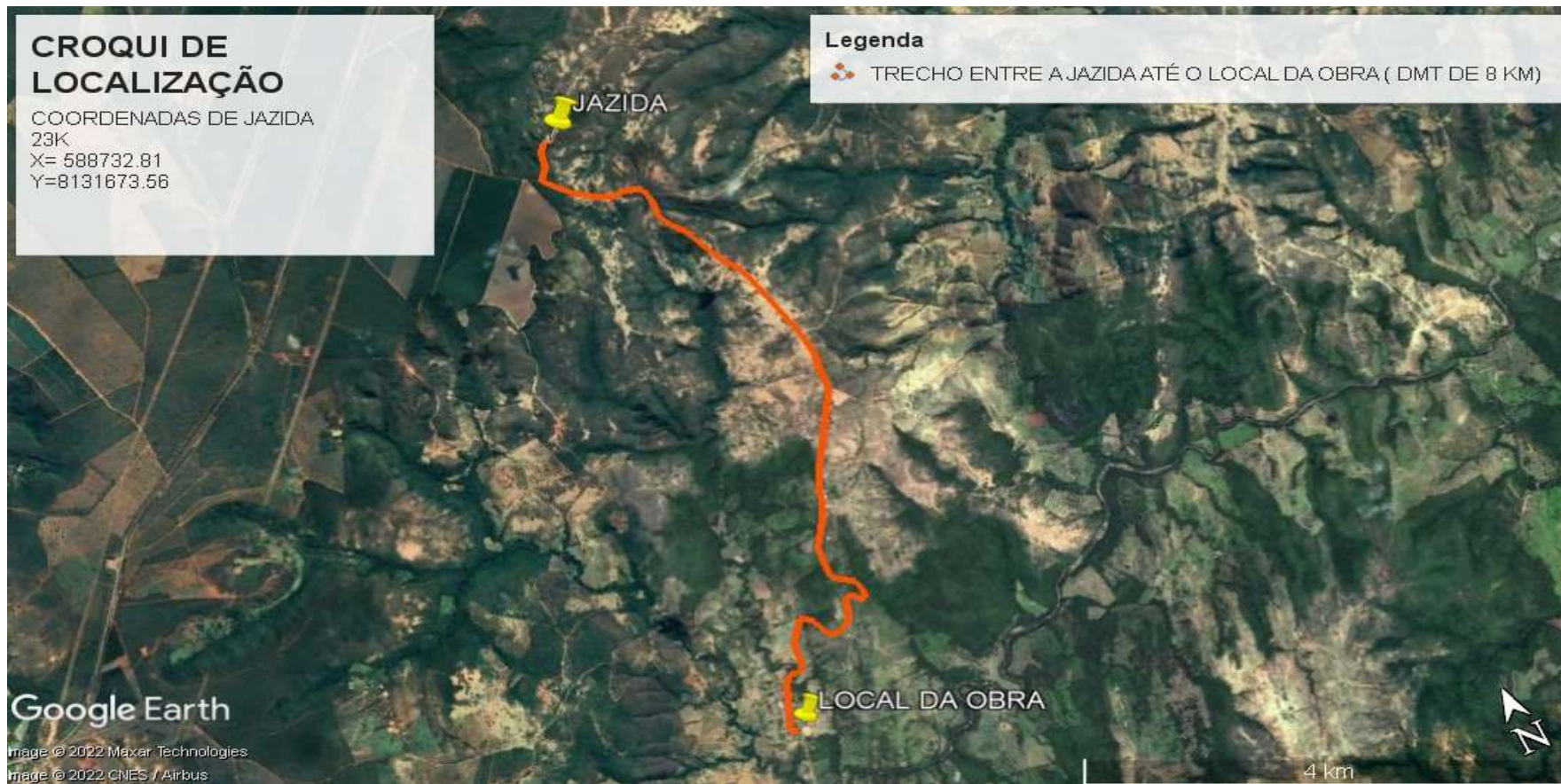
PMF

The screenshot displays the Google Maps navigation interface. On the left, a menu shows the starting point 'Boa Sorte - Vista Alegre, Claro dos Poço' and the destination 'Montes Claros, MG'. Below this, it indicates the departure time 'Partir agora' and provides an option to 'Enviar direções para o seu telemóvel'. The route summary shows a travel time of '1 h 1 min' and a distance of '57,8 km', noting it as the 'Trajeto mais rápido agora devido às condições de trânsito'. At the bottom left, there are icons for exploring local services like 'Restaurantes', 'Hotéis', 'Bombas de gasolina', and 'Estações de serviço'.

The main map area shows a blue route starting from a red pin at 'Boa Sorte' and ending at a blue pin at 'Montes Claros, MG'. The route passes through 'Vista Alegre' and 'São Geraldo'. A callout box on the map displays '1 h 1 min' and '57,8 km'. The map includes various geographical labels such as 'Santo João da Vereda', 'Boa Esperança', 'Canto do Engenho', 'Morro do Fogo', and 'Palmital'. At the top of the map, there are search filters for 'Estações de serviço', 'Carregamento de VE', 'Coisas a fazer', and 'Hotéis'. The Google logo and copyright information are visible at the bottom of the map.

TOTAL: 57,8 KM

JAZIDA DE CASCALHO



X=588732.81 m E Y=8131673.58 m S

TOTAL: 8 KM

MAX HENRIQUE VELOSO DA SILVA

ENGENHEIRO CIVIL – 248.998/D